



GENERATION FUTURE

# HOOVER

## sonix

INSTRUCTION MANUAL

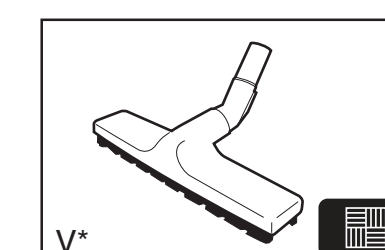
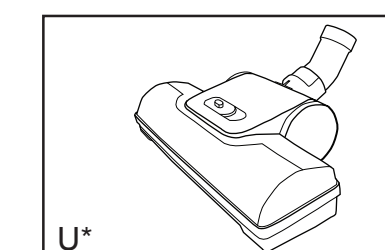
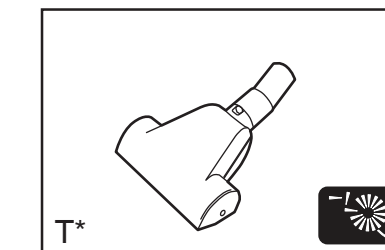
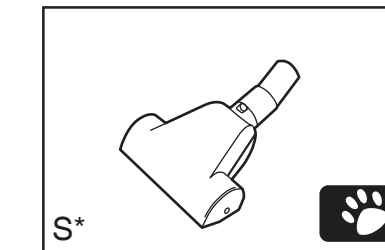
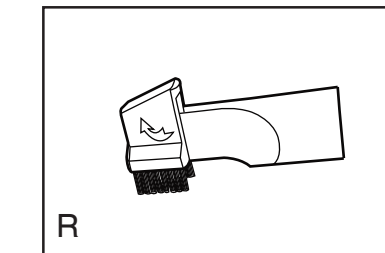
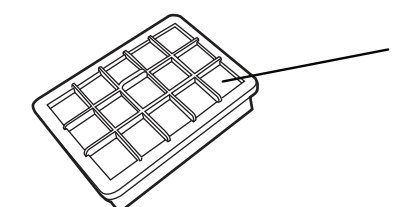
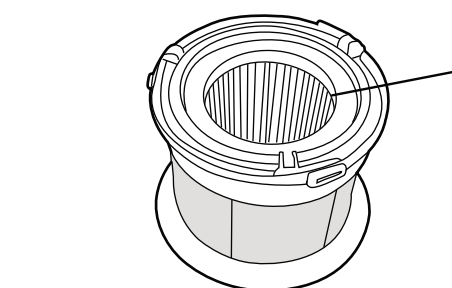
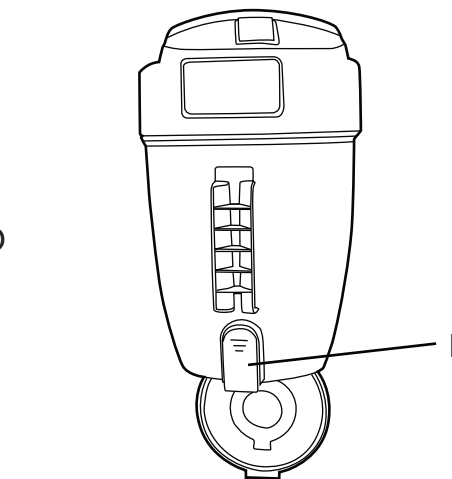
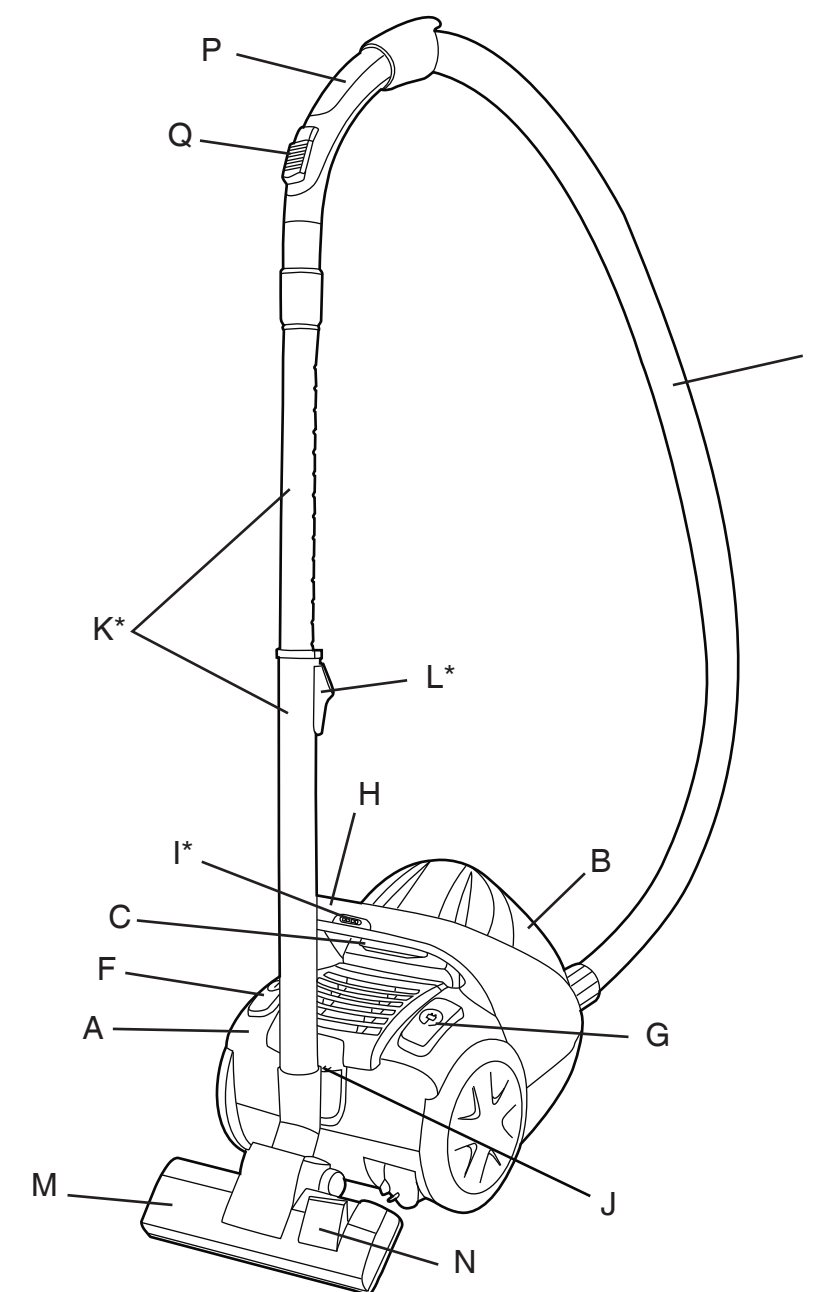
ENGLISH GB



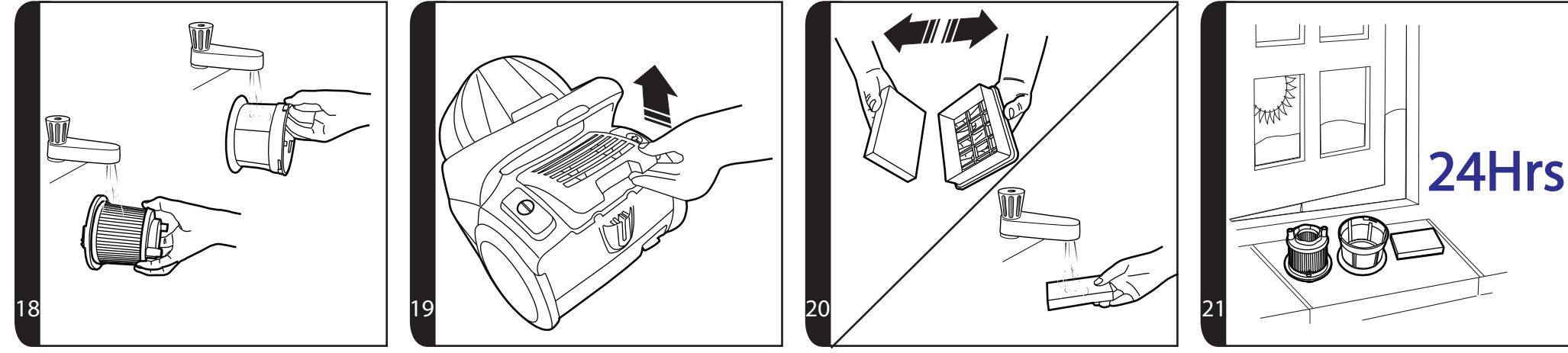
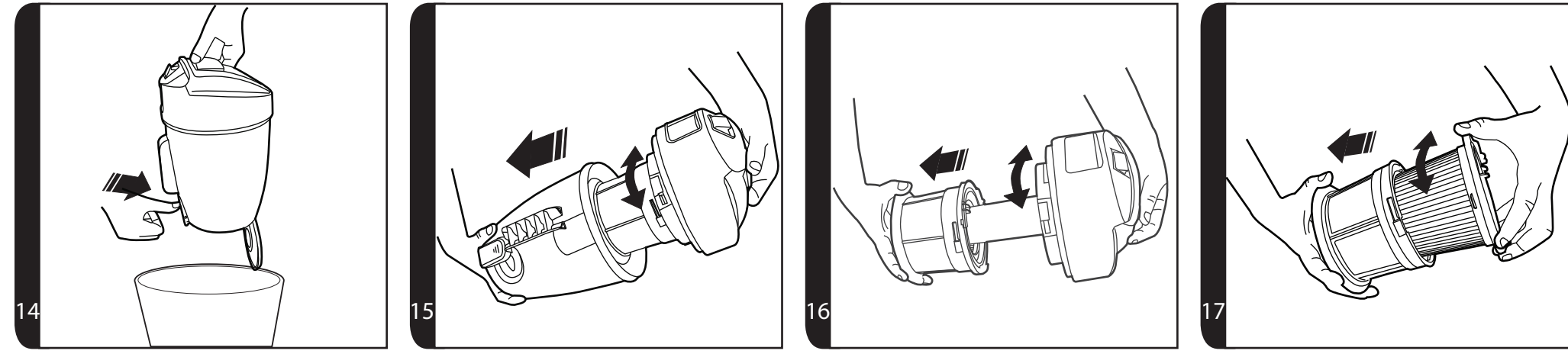
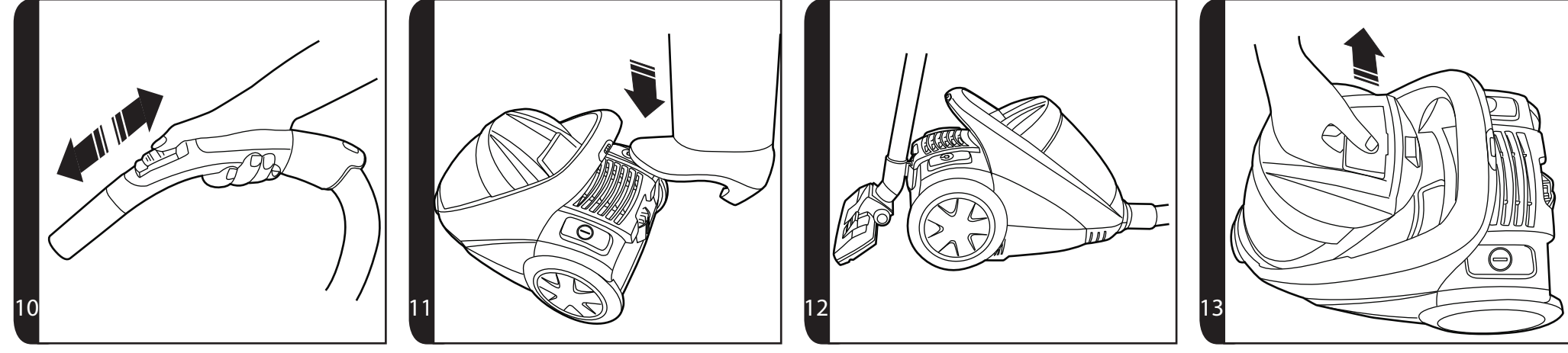
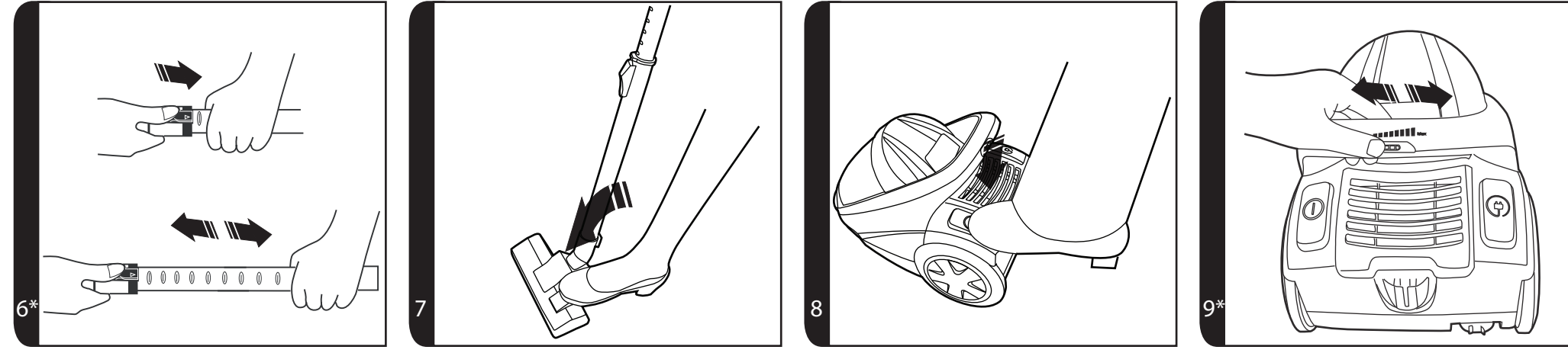
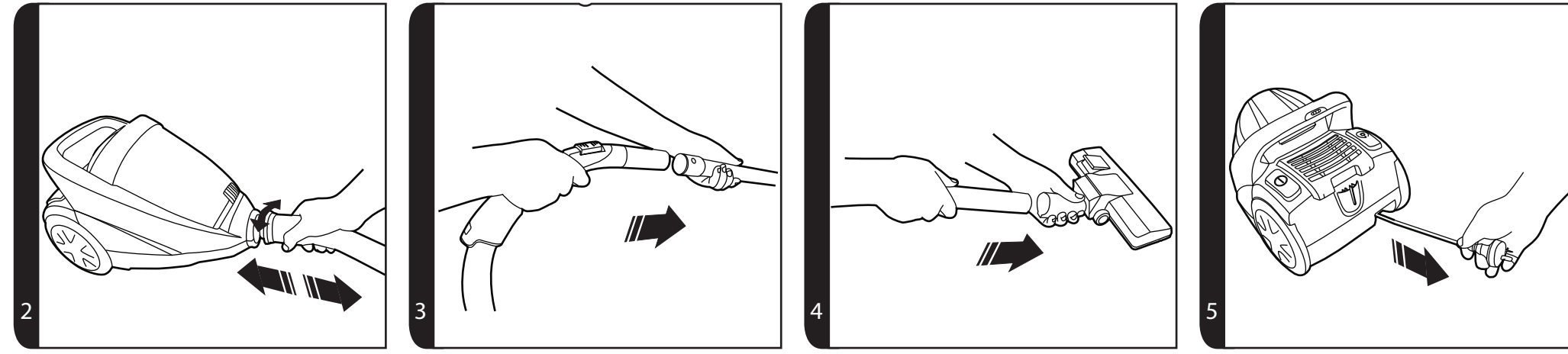
GENERATION FUTURE

PRINTED IN P.R.C.  
48002964

1



\* Certain models only



\* Certain models only



## IMPORTANT SAFETY REMINDERS

This cleaner should only be used for domestic cleaning, as described in this user guide. Please ensure that this guide is fully understood before operating the appliance. Use only attachments recommended or supplied by Hoover.

**WARNING:** Electricity can be extremely dangerous. This appliance is double insulated and must not be earthed. This plug is fitted with a 13 amp fuse (UK only).

**IMPORTANT:** The wires in the mains power lead are coloured in accordance with the following code:

**Blue – Neutral    Brown – Live**

**STATIC ELECTRICITY:** Some carpets can cause a small build up of static electricity. Any static discharge is not hazardous to health.

**AFTER USE:** Switch the cleaner off and remove the plug from the electricity supply. Always switch off and remove the plug before cleaning the appliance or attempting any maintenance task.

**SAFETY WITH CHILDREN, ELDERLY OR THE INFIRM:** Do not let children play with the appliance or its controls. Please supervise the use of the appliance by older children, the elderly or the infirm.”

**HOOVER SERVICE:** To ensure the continued safe and efficient operation of this appliance we recommend that any servicing or repairs are only carried out by an authorised Hoover service engineer.

## IT IS IMPORTANT THAT YOU DO NOT:

- Position the cleaner above you when cleaning the stairs.
- Use your cleaner out of doors or on any wet surface or for wet pick up.
- Pick up hard or sharp objects, matches, hot ashes, cigarette ends or other similar items.
- Spray with or pick up flammable liquids, cleaning fluids, aerosols or their vapours as this may cause risk of fire / explosion.
- Run over the supply cord when using your cleaner or remove the plug by pulling on the supply cord.
- Stand on or wrap the power cord around arms or legs when using the cleaner.
- Use the appliance to clean people or animals.
- Continue to use your cleaner if it appears to be faulty. If the supply cord is damaged stop using the cleaner IMMEDIATELY. To avoid a safety hazard, an authorised Hoover service engineer must replace the supply cord.

## GETTING TO KNOW YOUR CLEANER

- A. Cleaner main body
- B. Dust Container
- C. Dust Container Release Latch
- D. Dust Container Door Release Button
- E. Pre Motor Filter Pack
- F. On/off Button
- G. Cord Rewind Button
- H. Cleaner Carry Handle
- I. Variable Power Control Slider\*
- J. Park Slot
- K. Telescopic Tube\*
- L. Telescopic Tube Adjuster\*
- M. Carpet & Floor nozzle
- N. Floor Type Selector
- O. Hose
- P. Hose Handle
- Q. Suction Regulator
- R. 2 in 1 Tool:
  - Ra. Crevice tool
  - Rb. Dusting Brush
- S. Pet Hair Remover Mini Turbo Nozzle\*
- T. Allergy Remover Mini Turbo Nozzle\*
- U. Grand Turbo Nozzle\*
- V. Hard Floor Nozzle\*
- W. Exhaust Filter

## ASSEMBLING YOUR CLEANER

Remove all components from the packaging.

1. Connect the hose to the cleaner main body, rotate clockwise and ensure it locks into position. To release: anticlockwise the hose end and pull. **[2]**
2. Connect the handle to the tube upper end. **[3]**
3. Connect the tube lower end to carpet and floor nozzle. **[4]**

## USING YOUR CLEANER

1. Extract power cord and plug it into the power supply. Do not pull the cord beyond the red marker. [5]
2. Adjust the telescopic tube\* to the desired height by moving the telescopic tube adjuster\* up and raise or lower the handle to the most comfortable cleaning position. [6]
3. Carpet & Floor Nozzle. Press the floor type selector on the nozzle [7] to select the ideal cleaning mode for the floor type.
  - Hard Floor – Brushes are lowered to protect the floor.
  - Carpet – Brushes are raised for the deepest clean.
4. Switch the cleaner on by pressing the on/off button on the cleaner main body. [8]
5. Adjust the power level by sliding the variable power control slider\* on carry handle. [9]
6. Adjust the suction regulator to the desired level. [10]
7. Switch off at the end of use by pressing the on/off button. Unplug and press the cord rewind button to rewind the power cord back into the cleaner. [11]
8. To store your cleaner adjust telescopic tube\* to the lowest height setting and park the nozzle in the park slot on the cleaner main body. [12]

## ACCESSORIES

All accessories can be fitted to the end of the hose handle or the end of the tube.

**2 in 1 tool** – Combines several functions in one. The 2 in 1 tool can be stored neatly underneath the hose handle. [1R]

**Crevice Tool** – For corners and hard to reach areas.

**Dusting Brush** – For bookshelves, frames, keyboards and other delicate areas. To extend the brushes push the button on the body of the tool.

**Hard Floor Nozzle\*** – For wooden floors and other delicate floors. [1V]

**Pet Hair Remover Mini Turbo Nozzle\*** - Use the mini turbo nozzle on stairs or for deep-cleaning on textile surfaces and other hard to clean areas. Particularly suitable for pet hairs removal. [1S]

**Allergen Remover Mini Turbo Nozzle\*** – Use the mini turbo nozzle on stairs or for deep-cleaning on textile surfaces and other hard to clean areas. Particularly suitable for allergen removal. [1T]

**Grand Turbo Nozzle\*** – Use the turbo nozzle for deep cleaning on carpets. [1U]

**IMPORTANT:** Do not use the Grand turbo and mini turbo nozzles on rugs with long fringes, animal hides and carpet pile deeper than 15mm. Do not keep the nozzle stationary while the brush is rotating.

## CLEANER MAINTENANCE

### Emptying the Dust Container

When the dust reaches the max level indicator in the container, empty the dust container.

**IMPORTANT:** To maintain optimum performance do not allow the dust to sit higher than the max level.

1. Release the Dust Container by lifting the Dust Container Release Latch. Lift the Dust Container from the cleaner mainbody. [13]
2. To empty, hold the Dust Container over a bin with one hand, and use another hand to press the Dust Container Door Release Button. [14]
3. Close the Dust Container door and refit to the cleaner main body.

### Cleaning the washable filters

The cleaner is fitted with a pre-motor filter pack. To maintain optimum cleaning performance regularly remove the filters and tap them against the side of bin to release dust. The filters should be washed after every 5 container empties or when the filter has excessive dust levels.

#### **IMPORTANT: CLEAN FILTERS REGULARLY**

**Dirty filters affect performance, cause air blockage and motor failure. Failure to clean the filters may affect your Hoover guarantee.**

#### **To access the filter:**

1. Release the Dust Container by lifting the Dust Container Release Latch, Lift the Dust Container from the cleaner mainbody. [13]
2. Hold the Dust Container over a bin with one hand, and separate the dust bin from the dust bin lid to access the pre-motor filter pack. [15]
3. Remove the filter pack by rotating it anti-clockwise from Dust Container lid. [16]
4. Separate the mesh from the pre-motor filter by rotating it anti clockwise from the pre-motor filter. [17]
5. Gently tap and wash the filter and mesh, [18] Do not use hot water or detergents. Remove excess water from the filter and mesh and leave to dry fully before re-using. [21]
6. Reassemble the filter pack once fully dry and refit to the cleaner.

**IMPORTANT:** Always ensure the filter pack is fully dry before use.

**IMPORTANT:** Do not use the product without the filter pack fitted.

#### **To access the exhaust filter:**

1. Unclip the exhaust filter pack from the rear of the cleaner. [19]
2. Separate the grey foam filter from the holder. Gently tap and wash the grey foam filter using warm water. [20] Do not use hot water or detergents. Remove excess water from the filter and leave to dry fully before reusing. [21]

(\*Certain Models Only)



## Removing a blockage

1. Check if the dust container is full. If so refer to 'Emptying the dust container'.
2. If the dust container is empty but suction is still low:
  - A. Do the filters need cleaning? If so refer to 'Cleaning the washable filters'.
  - B. Check if there is any other blockage in the system - Use a rod or pole to remove any blockage from the extension tube or flexible hose.
  - C. Check if pre-motor filter is fitted.

### USER CHECKLIST

Should you have a problem with the product, complete this simple user checklist before calling your local Hoover service.

- Is there a working electricity supply to the cleaner? Please check with another electrical appliance.
- Is the dust container over-filled? Please refer to 'Cleaner Maintenance'.
- Is the filter blocked? Please refer to 'Cleaner Maintenance'.
- Is the hose or nozzle blocked? Please refer to 'Removing a blockage from the system'.
- Has the cleaner overheated? If so, it will take approximately 30 minutes to automatically reset.

### IMPORTANT INFORMATION

#### Hoover spares and Consumables

Always replace parts with genuine Hoover spares. These are available from your local Hoover dealer or direct from Hoover. When ordering parts always quote your model number.

#### Consumables

- Pre-motor filter/exhaust filter pack ---- U50 35601160

#### Spares

- Carpet & Floor Nozzle --- G128 35601161
- Flexible Hose -----E36 35601166
- Hard Floor Nozzle----- G129PC 35601162
- Pet Hair Remover Mini Turbo nozzle---- J51 35601163
- Allergen Remover Mini Turbo Nozzle----J52 35601164
- Grand Turbo Nozzle----J53 35601165

## Hoover Service

Should you require service at any time, please contact your local Hoover Service Office.

### Quality

Hoover's factories have been independently assessed for quality. Our products are made using a quality system which meets the requirements of ISO 9001

### The Environment:

This appliance is marked according to the European Directive 2002/96/EC on Waste Electrical and Electronic Equipment (WEEE). By ensuring this product is disposed of correctly you will help prevent potential negative consequences for the environment and human health, which could otherwise be caused by inappropriate waste handling of this product.

The symbol on the product indicates that this product may not be treated as household waste. Instead it shall be handed over to the appliance collection point for recycling of electrical and electronic equipment. Disposal must be carried out in accordance with the local environmental regulations for waste disposal. For more detailed information about treatment, recovery and recycling of this product, please contact your local city office, your household waste disposal service or the shop where you purchased the product.

### Your Guarantee

The guarantee conditions for this appliance are as defined by our representative in the country in which it is sold. Details regarding these conditions can be obtained from the dealer from whom the appliance was purchased. The bill of sale or receipt must be produced when making any claim under the terms of this guarantee.

Subject to change without notice.