



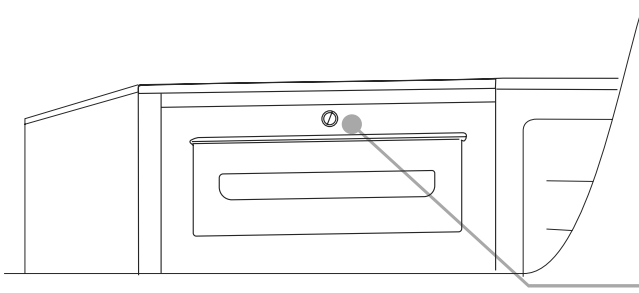
# FREEZER

FREEZER .....	1 ~ 2	GB
FREEZER .....	3 ~ 4	DA
FREEZER .....	5 ~ 8	CZ
FREEZER .....	9 ~ 11	DU
FREEZER .....	12 ~ 17	RU
FREEZER .....	18~22	FI
FREEZER .....	23~26	NO
FREEZER .....	27 ~ 29	SW

## SINGLE DOOR FREEZER

Wait at least two hours before switching the appliance on, in order to ensure that the refrigerant circuit is fully efficient.

### CONTROL PANEL

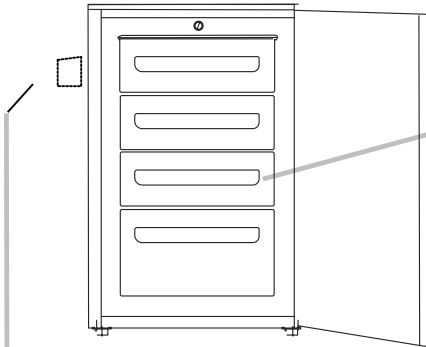


The thermostat unit to control the appliance is located on the right of the top cover.

### DEFROSTING and FREEZING

The rating plate states the maximum quantity of foods that can be frozen, (see "gure 2). Freezing is guaranteed with any knob setting.

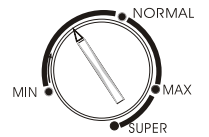
(Figure 2)



We recommend you defrost the freezer area when the layer of frost is more than 3 mm thick.

NB. This is the rating plate. If you need to contact our Service Department in the event of faults, remember to give them the information on the plate.

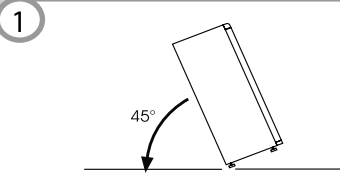
Important: If the room temperature is very warm, the appliance may work continuously and a layer of frost will deposit on the surface of the evaporator tubes and wires. In this case, turn the knob to lower settings (MIN).



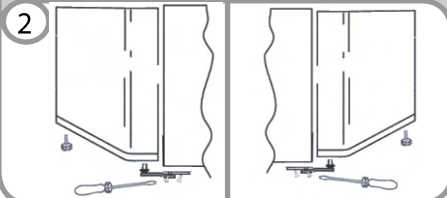
## REVERSING THE OPENING OF THE DOORS

In order to reverse the opening of the doors, follow the indications in relation to the insert and hinge type your product is made up of.

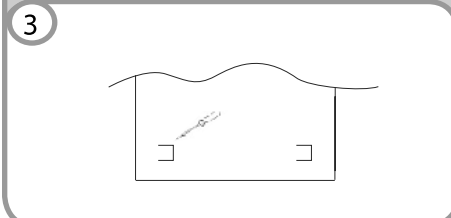
Place or tilt the fridge at a 45° angle, since it is necessary to work on the bottom of the appliance



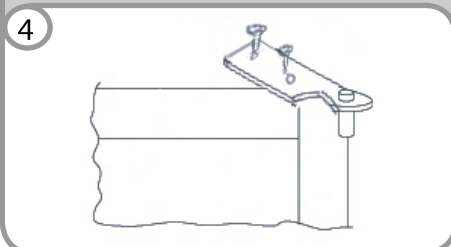
Remove the bottom hinge by removing the screws, the plug and washers, then remove the bottom door



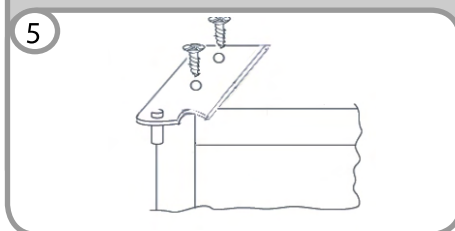
Remove the caps (A) and (B), loosen the screws and partially remove the panel.



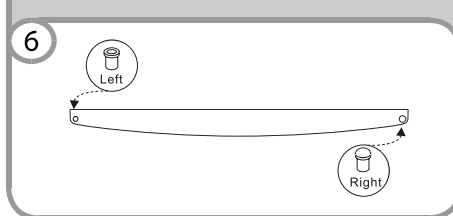
Unscrew the right hinge



Before reassemble the hinge to the left side, reverse the direction of the hinge.



Remove the plug on the left-hand side and insert it on the right hand-side of the door.



Reassemble the hinges and doors working from bottom to top, 1 2

