

NUOVI COMBINATI MONOCOMPRESSORE	da pag.1 a pag.2	IT
NEW COMBINED SINGLE COMPRESSOR FRIDGE FREEZERS	page 3 to page 4	GB
NOUVEAU COMBINE REFRIGERATEUR/CONGELATEUR A COMPRESSEUR UNIQUE	pages 5 à 6	FR
NEUE KÜHL-GEFRIER-KOMBINATION MIT EINSTUFIGEM KOMPRESSOR	Seite 7 bis Seite 8	DE
NUEVOS REFRIGERADORES MONOCOMPRESORES	de pág.9 a pág.10	ES
NOVOS CONGELADORES COMBINADOS MONOCOMPRESSORES	da pág. 11 à pág.12	PT
NEOI ΨΥΓΕΙΟΚΑΤΑΨΥΚΤΕΣ ΕΝΟΣ ΣΥΜΠΙΕΣΤΗ	από σελ. 13 έως σελ. 14	EL
NOWE, KOMBINOWANE LODÓWKO-ZAMRAŻARKI Z JEDNYM KOMPRESOREM...	od str. 15 do str.16	PL
NOVÁ CHLADNIČKA S MRAZNIČKOU (S JEDNÍM KOMPRESOREM)	od strany 17 do strany 18	CZ
NIEUWE ENKELE COMPRESSOR VRIES/KOELCOMBINATIE	pag. 19 t/m pag. 20	NL
UUDET YHDISTETYT YHDEN KOMPRESSORIN JÄÄ-PAKASTINKAAPIT	sivut 21-22	FI
NYE KOMBISKAP MED ENKEL KOMPRESSOR	fra side 23 til side 24	NO
NYA KOMBINERADE ENKEL KOMPRESSOR KYLFRYSAR	från sida 25 till sida 26	SV
NYE KOMBINEREDE KØLESKABE/FRYSERE MED ENKELTKOMPRESSORER	fra s. 27 til s.28	DA



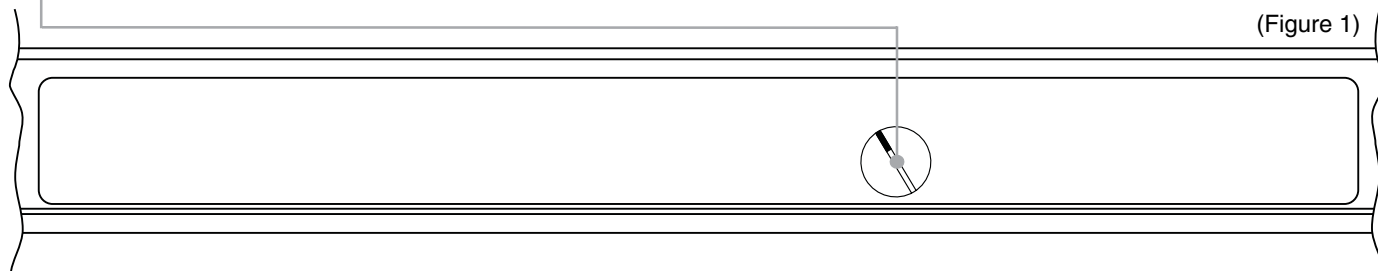
NEW COMBINED SINGLE COMPRESSOR FRIDGE FREEZERS

CONTROL PANEL

Open the top door of the fridge in order to access the control panel.

Turn the Dial to switch on the appliance, then set the temperature of the freezer compartment (recommended setting - 2 or 3) and fridge. Turn the dial to „0“ or „●“ to turn the appliance off. To completely remove the voltage from the appliance, disconnect the plug from the power output.

(Figure 1)




FREEZING

The preservation of frozen foods is guaranteed in all of the freezer's compartments.

During maximum capacity of the freezer, it is advised to remove the drawers and to place the food directly on the shelves for optimal freezing.

In some products there is a  section at the top (see quick guide).

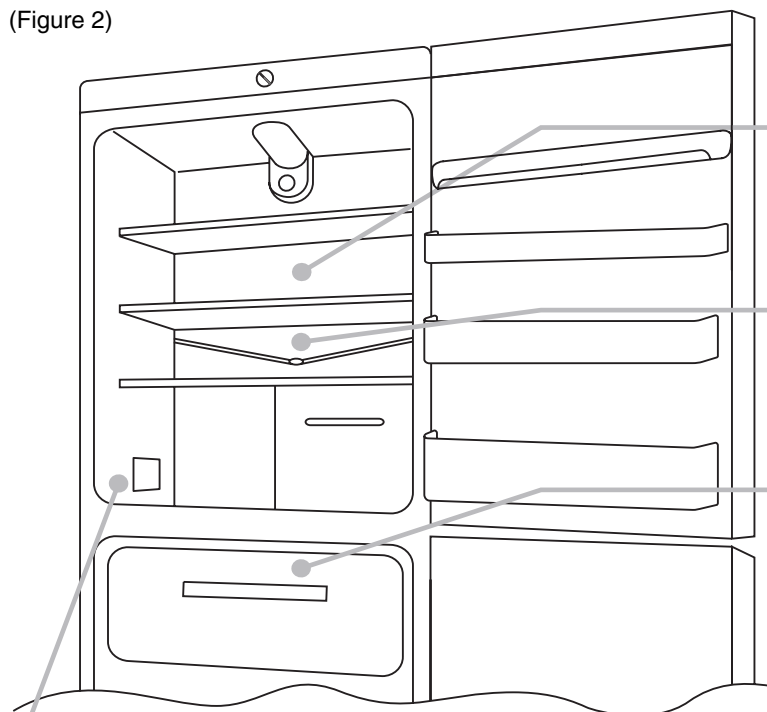
Place the foods to be frozen in the  drawer, turn the thermostat clock-wise to position 5. After 24 hours, freezing is completed. Therefore, reset the thermostat to position 2-3

The rating plate states the maximum quantity of foods that can be frozen, (see figure 2)

To test the freezing and conservation functions, remove all the drawers apart from the bottom one.

DEFROSTING

(Figure 2)



Defrosting of the fridge compartment is automatic in this product.

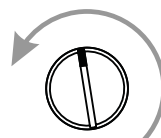
A small amount of frost/drops of water on the back of the fridge compartment is normal when the freezer is on.

Make sure the water outlet is always clean. Ensure foods do not touch the back or sides of the fridge compartment.

We recommend you defrost the freezer area when the layer of frost is more than 3 mm thick.

NB. This is the rating plate. If you need to contact our Service Department in the event of faults, remember to give them the information on the plate.

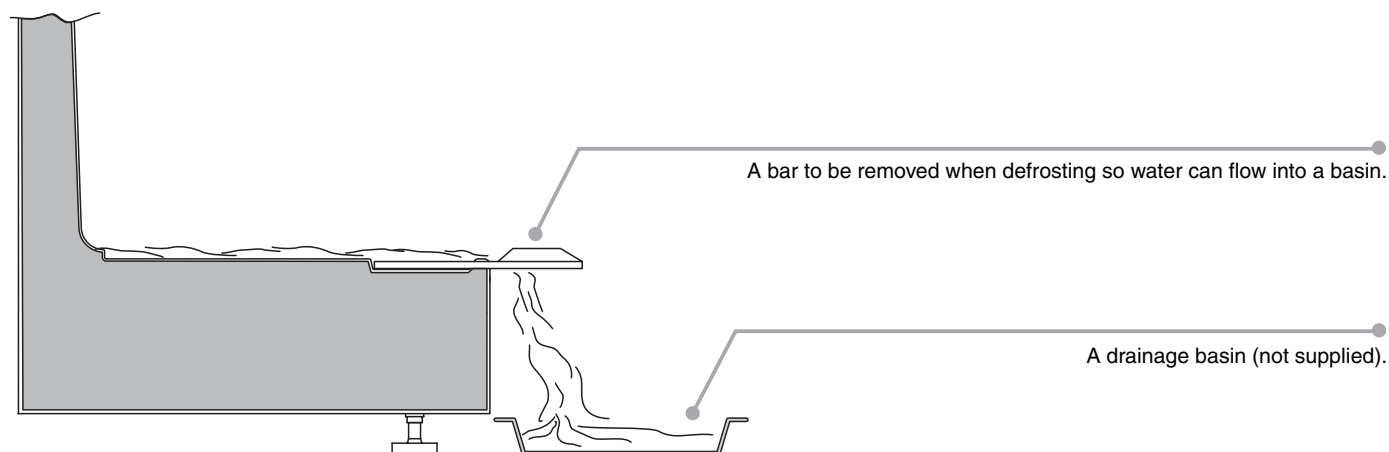
Important: If the room temperature is very warm, the appliance may work continuously and a layer of frost will deposit on the back of the fridge compartment. In this case, turn the dial to a lower settings (1-2).



DRAINING WATER

The appliance has a system for draining water while defrosting.

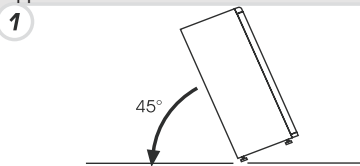
This system consists of:



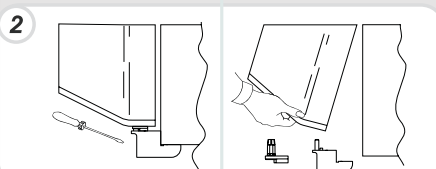
REVERSING THE OPENING OF THE DOORS

In order to reverse the the doors, follow the instructions in relation to the insert and hinge type of your product.

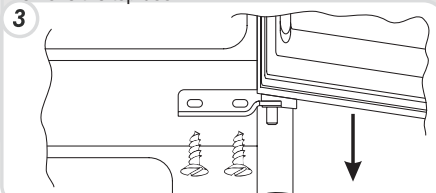
Place the appliance on the floor or at a 45° angle, as it is necessary to work on the bottom of the appliance.



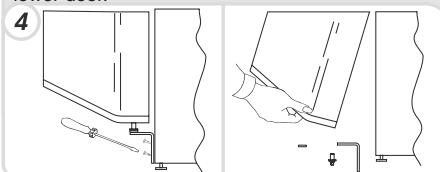
Remove the bottom right hinge by unscrewing the screws, pin and washers, then remove the bottom door



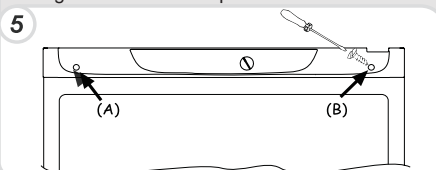
Remove the screws from the central hinge and remove the top door.



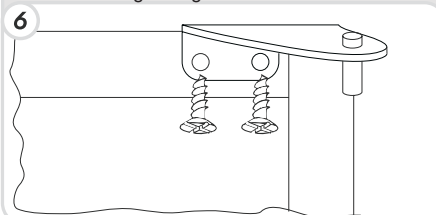
Take off the bottom right-hand hinge by removing the screws, pin and washers, then remove the lower door.



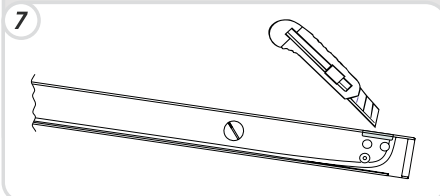
Remove the caps (A) and (B), loosen the screws and partially remove the panel making sure not to damage the rear electric part



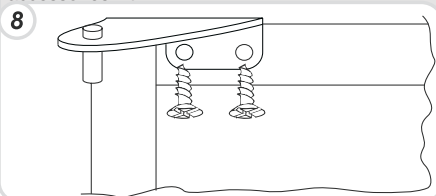
Unscrew the right hinge.



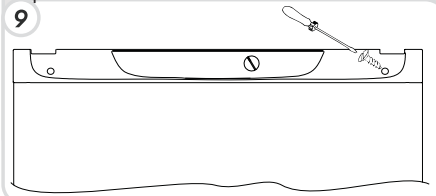
Mark and break the left-hand slot on the panel, in the insert area.



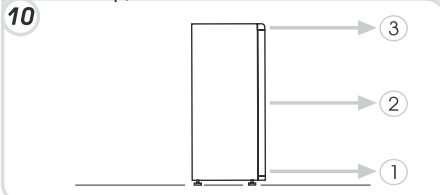
Flip the top left-hand hinge found in the accessories kit.



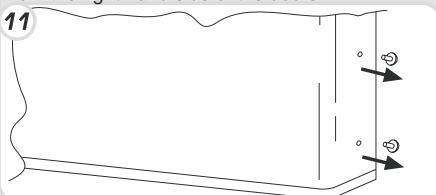
Fit the panel, and secure with the screws and caps.



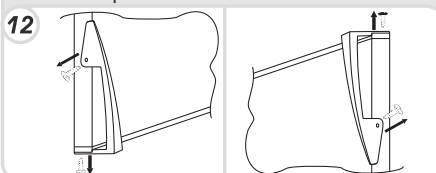
Remount the hinges and doors working from bottom to top, 1 → 2 → 3



To reverse the handles: remove the outer caps from the right-hand side of the doors.



Unscrew the handles from the left-hand side and move them to the right-hand side, then position the outer caps on the left-hand side of the doors.



Put the appliance in an upright position and wait two hours before turning it on.

