

# ***Instruction Book***

***HST 5143 W***



## BEFORE USING THE APPLIANCE

Your new appliance is designed exclusively for domestic use.

**To ensure best use of your appliance, carefully read the operating instructions which contain a description of the appliance and advice on storing and preserving food. Keep this handbook for future reference.**


## BEFORE USING THE APPLIANCE

### 1. Packing

The packing material is 100% recyclable and bears the recycling symbol. Comply with the local regulations for disposal. Keep the packing materials (plastic bags, polystyrene parts, etc.) out of the reach of children, as they are a potential source of danger.

### 2. Scrapping/Disposal

The appliance is manufactured using recyclable material. This appliance is marked in compliance with European Directive 2002/96/EC on Waste Electrical and Electronic Equipment (WEEE). By ensuring the correct scrapping of this appliance, you can help prevent potentially negative consequences for the environment and the health of persons.

The symbol  on the appliance, or on the accompanying documents, indicates that this appliance should not be treated as domestic waste but must be taken to a suitable collection centre for the recycling of electrical and electronic equipment. When scrapping the appliance, make it unusable by cutting off the power cable and removing the doors and shelves so that children cannot easily climb inside. Scrap the appliance in compliance with local regulations on waste disposal, taking it to a special collection centre; do not leave the appliance unattended even for a few days, since it is a potential source of danger for children. For further information on the treatment, recovery and recycling of this appliance, contact your

1. After unpacking the appliance, make sure it is not damaged and that the door closes properly. Any damage must be reported to the dealer within 24 hours of delivery of the appliance.
2. Wait at least two hours before switching the appliance on, in order to ensure that the refrigerant circuit is fully efficient.
3. Make sure installation and the electrical connection are carried out by a qualified technician according to the manufacturer's instructions and in compliance with the local safety regulations.
4. Clean the inside of the appliance before using it.

competent local office, the household waste collection service or the shop where you purchased the appliance.

### Information:

This appliance does not contain CFC (the refrigerant circuit contains R134a) or HFC (the refrigerant circuit contains R600a) (refer to the rating plate inside the appliance).  
Appliances with isobutane (R600a): Isobutane is a natural gas without environmental impact but is flammable. Therefore, make sure the refrigerant circuit pipes are not damaged.

### Declaration of conformity

. This appliance is intended for storing food and is manufactured in conformity with European regulation (EC) No. 1935/2004.



. This product has been designed, manufactured and marketed in compliance with:  
- the safety objectives of Low Voltage Directive 2006/95/EC;  
- the protection requirements of EMC Directive 2004/108/EC

. Electrical safety of the appliance is guaranteed only if it is connected to an efficient and approved earthing system



# IMPORTANT SAFETY INSTRUCTIONS

These warnings are provided in the interests of your safety. Ensure that you understand all before installing or using this appliance. Your safety is of paramount importance.

If you are unsure about any of the meanings or these warnings contact the Customer Care Department.

## Installation

- This appliance is heavy. Care should be taken when moving it.
- It is dangerous to alter the specifications or attempt to modify this product in any way.
- Ensure that the appliance does not stand on the electrical supply cable. If the supply cord is damaged, it must be replaced by the manufacturer, its service agent or similarly qualified persons in order to avoid a hazard.
- Any electrical work required to install this appliance should be carried out by a qualified electrician or competent person.
- Parts which heat up should not be exposed. Whenever possible, the back of the appliance should be close to a wall but leaving the required distance for ventilation as stated in the installation instructions.
- The appliance should be left for 2 hours after installation before it is turned on, in order to allow the refrigerant to settle.

**WARNING: Keep ventilation opening, in the appliance enclosure or in the built-in structure, clear of obstruction.**

## Child Safety

- This appliance is not intended for use by young children or infirm persons unless they have been adequately supervised by a responsible person to ensure that they can use the appliance safely.
- Young children should be supervised to ensure that they do not play with the appliance.

## During Use

- This appliance is designed for domestic use only, specifically for the storage of edible foodstuffs only.
- Frozen food should not be refrozen once it has thawed out.
- Do not place carbonated or fizzy drinks in the freezer.
- Ice lollies can cause 'frost/freezer burns' if consumed straight from the freezer.
- Do not remove items from the freezer if your hands are damp/wet, as this could cause skin abrasions or frost/freezer burns.

## Maintenance and Cleaning

- Switch off, and unplug the appliance before carrying out any cleaning or maintenance work.

- Do not use sharp instruments to scrape off frost or ice. (See defrosting instructions).

**WARNING: Do not use mechanical devices or other means to accelerate the defrosting process, other than those recommended by the manufacturer.**

**WARNING: Do not use electrical appliance inside the food storage compartments of the appliance, unless they are of the recommended**

**WARNING: Do not damage the refrigerant circuit.**

## Servicing

This product should be serviced by an authorised engineer, and only genuine spare parts should be used.

- Under no circumstances should you attempt to repair the machine yourself. Repairs carried out by inexperienced persons may cause injury or serious malfunctioning. Contact your local Service Force Centre.

## At the End of the Appliance Life

- Before discarding an old PRODUCT, switch off and disconnect it from the power supply, Cut off and render any plug useless.
- Ensure that the door cannot jam (removing it is best), regardless of whether or not it can be pushed open from inside.

**AN OLD PRODUCT CAN BE A DEADLY PLAYTHING FOR CHILDREN**

**CAUTION: At the end of the function life of the appliance it must be disposed in accordance with the W.E.E.E directive (See below). You appliance contains R600a refrigerant and inflammable gas in the insulating foam.**



Please read this instruction book carefully before use and retain for future reference.

## 2. CORRECTLY POSITIONING

### Well Ventilating

There is need of good ventilation around the refrigerator for easy dissipation of heat, high efficiency of refrigeration and low power consumption. For this purpose, sufficient clear space should be need around the refrigerator. Its back is at least 100mm away from the wall, its sides at least have a space of 100mm separately and the height from over its top is not less than 200mm. A clear space should be left to open its doors to 160°.

---

### Power Supply

The refrigerator is only applied with power supply of single phase alternating current of (220-240)V~/50Hz;230V~/60Hz. If fluctuation of voltage in the district user is of so large that the voltage exceeds the above scope, for safety sake, be sure to apply a.c. automatic voltage regulator to the refrigerator. The refrigerator must employ a special power socket instead of common one with other electric appliances. Its plug must match the socket with ground wire.

---

### Power Line Cord

The cord should be neither lengthened nor folded into coil during operation. Moreover, it is forbidden that cord is kept close onto the compressor at the back of the refrigerator, the surface temperature of which is quite high when operating. Touching with it would deactivate the insulation or cause leakage for electricity.

---

### Protection from Moisture

Avoiding placing the refrigerator in a place where heavy moisture is present so as to minimize possibility of rusty for its metal parts. Still more, the refrigerator is forbidden to be directly sprayed by water, otherwise, poor insulation and current leakage would occur.

---

### Protection from Heat

The refrigerator should be far away from any heat source or direct sunshine.

### **Fixing Stable**

Floor on which refrigerator will be placed must be flat and solid.

It should not be laid on any soft material such as foam plastic, etc. If the refrigerator is not on the same level, adjust the screws suitably. the refrigerator should not be placed near anything which may echo.

---

### **Keep Away from Danger**

It is inadvisable that the refrigerator is placed near any volatilizable or combustible such as gas, petrol, alcohol, lacquer and banana oil, etc. The above-mentioned objects can not be stored in the refrigerator.

---

### **Moving**

When fixed or moved, the refrigerator can not be set horizontally or declinet to more than 45° or upside-down.

### 3. Cautions

- Water contained in food or getting into air inside the refrigerator by opening doors may form a layer of frost inside. It will weaken the refrigerator when the frost is thick, while it is more than 2mm thick, you should defrost.
- Defrosting in freezer chamber is operated manually. Before defrosting, take the food, the ice tray and the shelf out into the cold storing chamber temporarily then set the knob of the temperature regulator to position "0" (where the compressor will stop working) and leave the door open until ice and frost dissolve thoroughly deposited at the bottom of the freezer chamber, wipe off the water with soft cloth. In the case of speeding up the defrosting, you may put a bowl of warm water (about 50 C) into the freezer chamber, and be sure to set the knob of the temperature regulator to original position after defrosting.
- It's inadvisable to heat the freezer chamber directly with hot water or hair dryer while defrosting to prevent deformation of the inner case.
- It's also inadvisable to scrape of ice and frost or separate food from the containers which have been congealed together with the food with sharp tool or wooden bars, so as not to damage the inner casing or the surface of the evaporator.
- If the supply cord of this appliance is damaged, it must only be replaced by a repair shop appointed by the manufacturer, because special purpose tools are required.

### 4. Care and maintenance

#### Replacing lamps

When replacing the lamp, proceed as follows:

- Unplug the appliance from the mains.
- Squeeze the tabs on the sides of the lamp cover and remove it.
- Replace the lamp with a new one, maximum watts recommended in the label inside the appliance next to the lamp.
- Put the lamp cover back on and wait 5 minutes before plugging the appliance back into the mains.

## 5. Troubleshooting

### 1. WHEN THE REFRIGERATOR DOES NOT WORK

Check if there is a power failure.

Check if the power plug is plugged into the power outlet.

Check that the fuse has not blown.

### 2. WHEN THE REFRIGERATOR IS COOLING EXCESSIVELY

The temperature control dial may be set too high.

If you place foodstuffs containing a lot of moisture directly under the cool air outlets, they will freeze easily.

This does not indicate a malfunction.

### 3. WHEN THE REFRIGERATOR IS NOT COOLING SUFFICIENTLY

The food may be packed too tightly together which will block the flow of cool air.

You may have put something hot or a lot of foodstuffs into the refrigerator .

The door may not have been closed properly.

The door gaskets may be damaged.

The refrigerator may not be ventilated.

There may be insufficient clearance between the refrigerator and the surfaces

Immediately both sides and above.

The temperature control dial may not be set properly

### 4. WHEN THE DEFROSTING WATER OVERFLOWS INSIDE THE REFRIGERATOR AND ONTO THE FLOOR.

Check that the drain pipe and the drain hose are not clogged.

Check that the drain pan is housed properly.

### 5. WHEN CONDENSATION FORM ON THE OUTSIDE OF THE REFRIGERATOR

Condensation may form on the outside when the humidity is high such as during a wet season. This is the same result as the condensation formed when chilled water is poured into a glass. It does not, therefore, indicate a failure, wipe dry with a dry cloth.

### 6. WHEN YOU HEAR A SOUND LIKE WATER FLOWING

A sound like water flowing is the refrigerant flowing. It does not Indicate a malfunction.

### 7. WHEN THE CABINET'S SIDE PANEL HEATS UP

The side panel of the cabinet will heat up when the door is opened or closed frequently, when starting the unit and when the unit operates in summer with high ambient outside temperature, In such case, do not touch the panel, it results from the dissipation of the heat from inside the cabinet, and it does not mean that something is wrong with the refrigerator.

## 6. Technical specifications

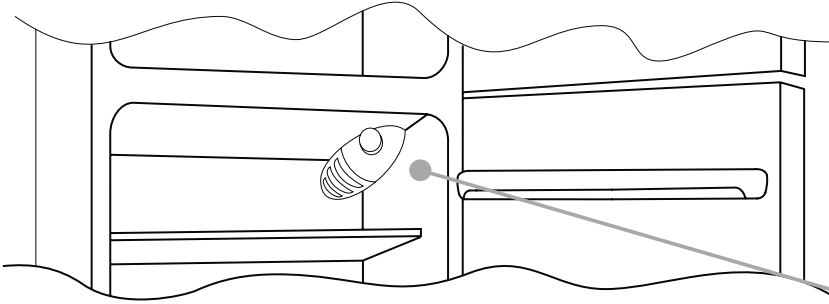
\*For the detailed technical specifications, please refer to the nameplate at the back of the refrigerator.

\*Specifications are subject to change without prior notice.

## DOUBLE DOOR

Wait at least two hours before switching the appliance on, in order to ensure that the refrigerant circuit is fully efficient.

## CONTROL PANEL



The thermostat box to control the appliance is located inside the fridge compartment on the top right. To check whether the appliance is functioning, make sure that the thermostat knob is not set on "0".

## DEFROSTING and FREEZING

The rating plate states the maximum quantity of foods that can be frozen, (see figure 2). Freezing is guaranteed with any knob setting.

(Figure 2)



Defrosting of the fridge compartment occurs automatically in this product.

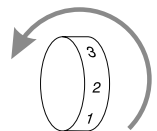
We recommend you defrost the freezer area when the layer of frost is more than 3 mm thick.

A small amount of frost or drops of water on the back of the fridge compartment when the fridge is working is normal

Make sure the water outlet is always clean. Make sure foods do not touch the back or sides of the fridge compartment

NB. This is the rating plate. If you need to contact our Service Department in the event of faults, remember to give them the information on the plate.

Important: If the room temperature is very warm, the appliance may work continuously and a layer of frost will deposit on the back of the fridge compartment. In this case, turn the knob to lower settings (1-2).

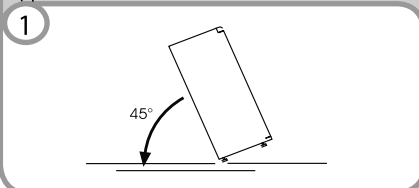


## REVERSING THE OPENING OF THE DOORS

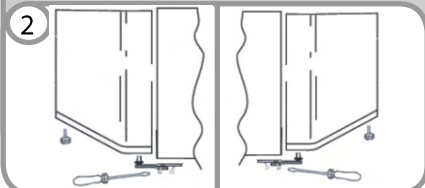
In order to reverse the opening of the doors, follow the indications in relation to the insert and hinge type your product is made up of.

(A)

Place or tilt the fridge at a 45° angle, since it is necessary to work on the bottom of the appliance



Remove the bottom hinge by removing the screws, the plug and washers, then remove the bottom door



Remove the middle screw and remove the top door

