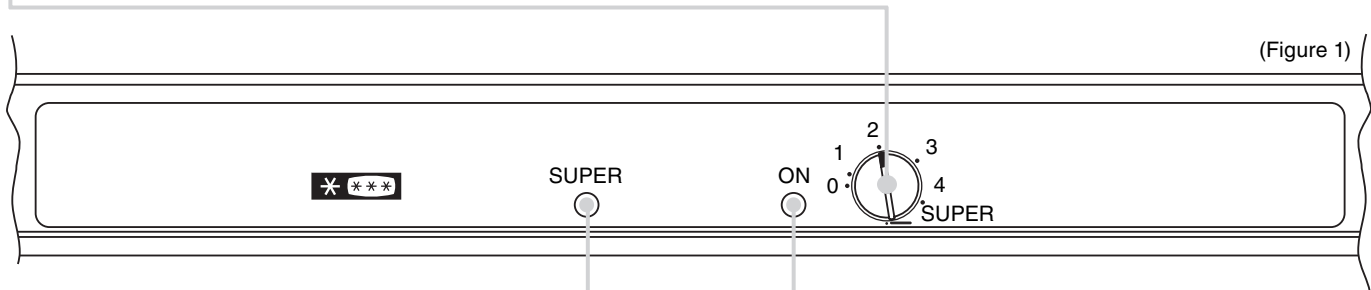


DOUBLE DOOR TOTAL NO FROST

CONTROL PANEL

Open the top door of the fridge in order to access the control panel.

Turn on the knob to switch on the appliance and set the temperature of the freezer compartment and fridge. We recommend you set the temperature to 2 or 3. Turn the knob to "0" to turn off the appliance.



The orange light comes on when the thermostat knob is turned to SUPER. In this case the compressor continues to function as normal.

The green "ON" light shows that the unit is working. This light is on irrespective of the knob setting, except for when the knob is set to 0

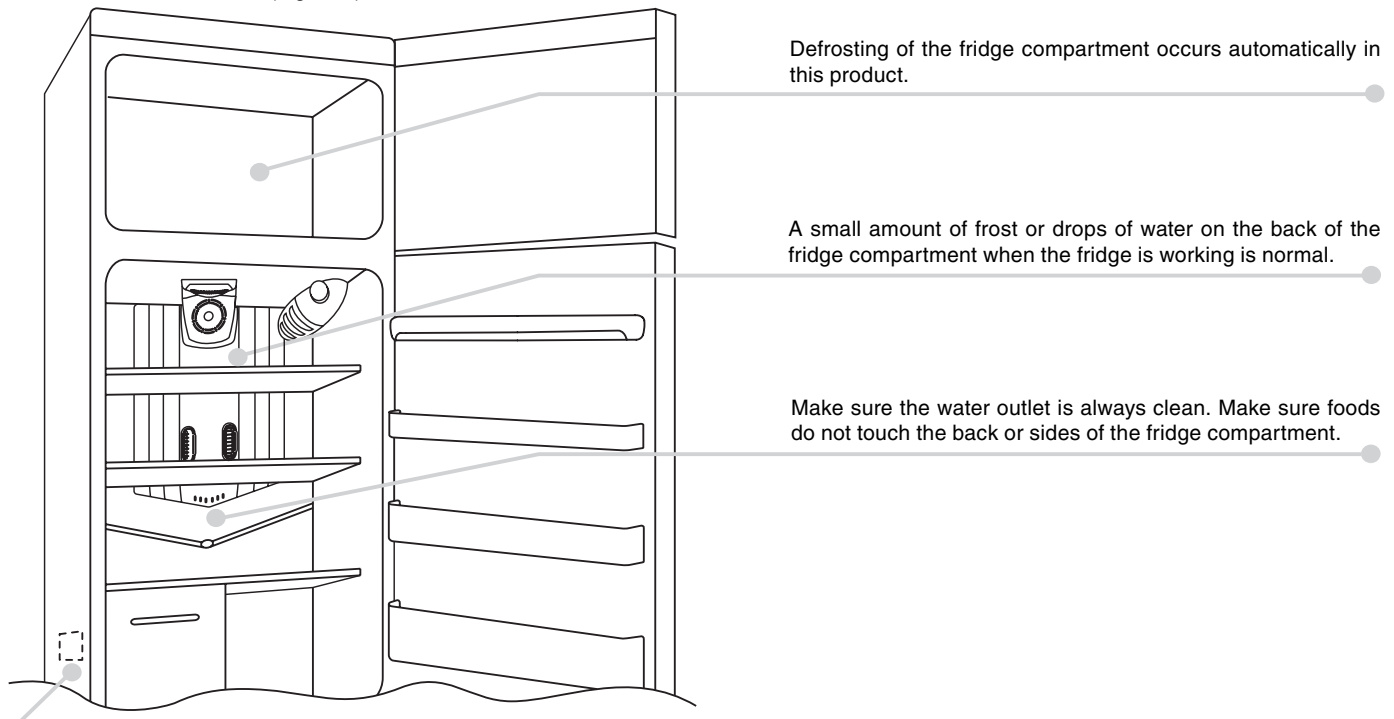
Important: Some appliances will start working at least 6 minutes after the plug has been inserted in the power outlet and the temperature has been set.

FREEZING

The rating plate states the maximum quantity of food that can be frozen. First of all, create the space necessary to place the load to be frozen on the bottom shelf of the freezer. After a few hours, place the food to be frozen on the bottom shelf of the freezer and set the thermostat to SUPER. At the same time, an orange indicator will light up on the panel. Freezing will be completed after 24 hours. (need one blank space) In any case, after 26 hours, from the SUPER position, the circuit board automatically deactivates the function, turning off the orange light. (need one blank space) After the freezing process reset the thermostat knob to the recommended settings.

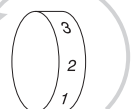
DEFROSTING

(Figure 2)



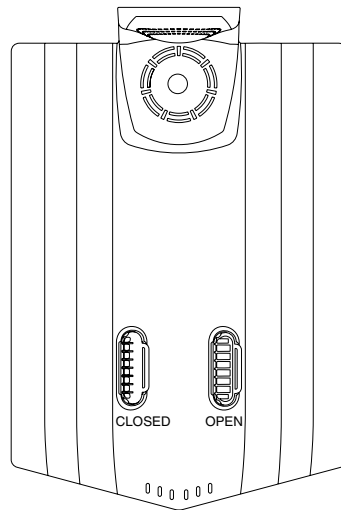
N.B. This is the rating plate. If you need to contact our Service Department in the event of faults, remember to give them the information on the plate.

Important: If the room temperature is very warm, the appliance may work continuously and a layer of frost will deposit on the back of the fridge compartment. In this case, turn the knob to lower settings (1-2).



TOTAL NO FROST

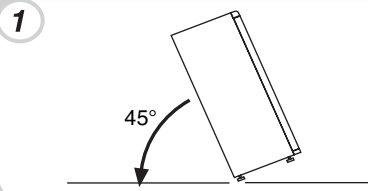
The products with total no frost comprise of a ventilation system made up of 2 manually adjustable outlet vents. It is recommended that you keep the outlet vents partially or completely open.



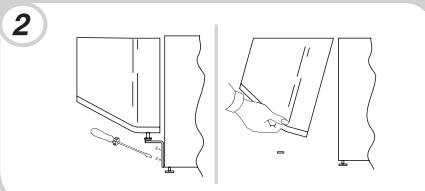
REVERSING THE OPENING OF THE DOORS

In order to reverse the opening of the doors, follow the indications in relation to the insert and hinge type your product is made up of.

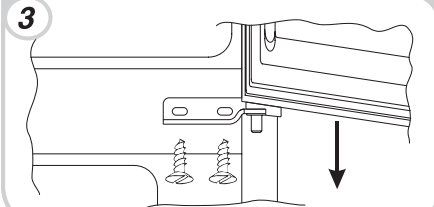
Place or tilt the fridge at a 45° angle, since it is necessary to work on the bottom of the appliance.



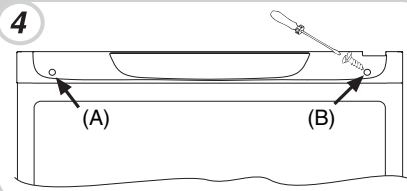
Remove the bottom hinge by removing the screws, the plug and washers, then remove the bottom door.



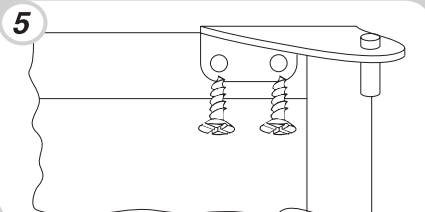
Remove the middle screw and remove the top door.



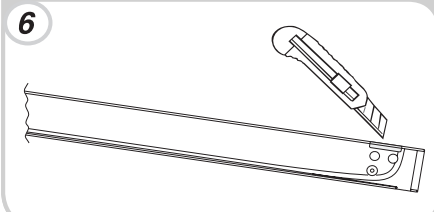
Remove the caps (A) and (B), loosen and remove the screws and partially remove the panel.



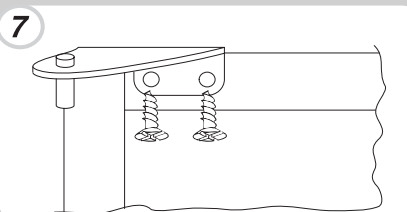
Unscrew the right hinge.



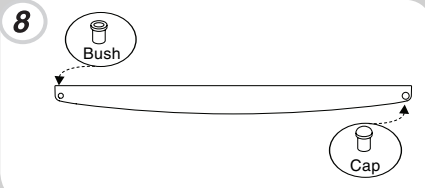
Mark and break the left-hand slot on the panel, in the insert area.



Flip the top left-hand hinge found in the accessories kit.



Remove the plug on the left-hand side and insert it on the right hand-side of the central and lower inserts.



Reassemble the hinges and doors working from bottom to top 1 → 2 → 3.

