

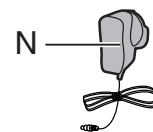
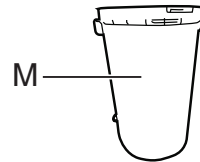
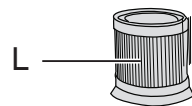
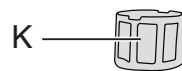
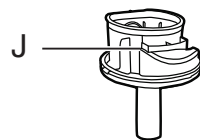
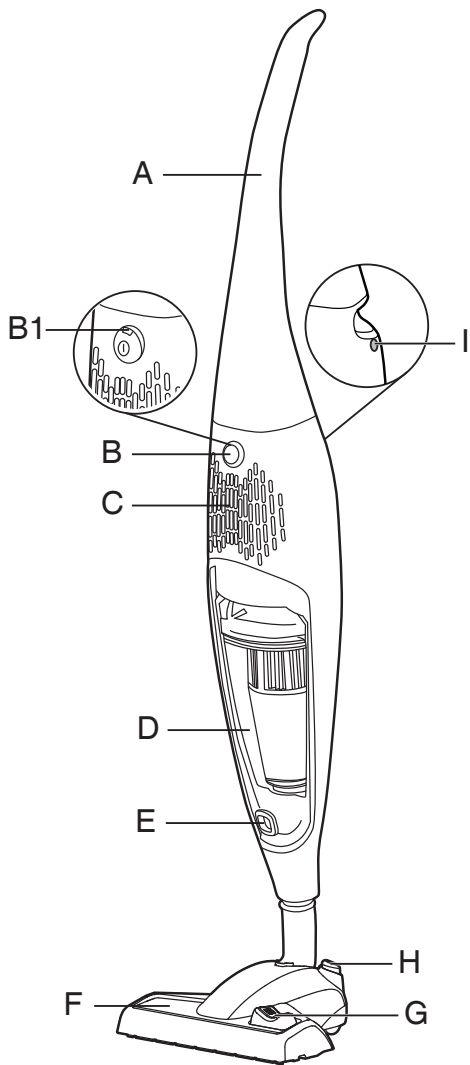
HOOVER

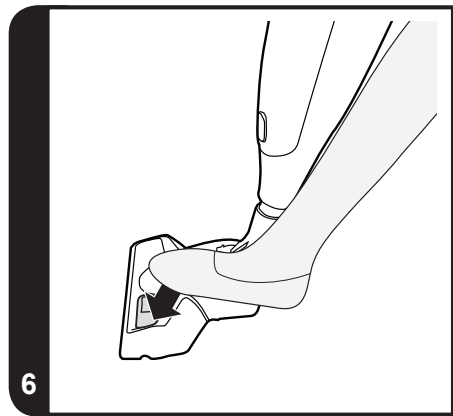
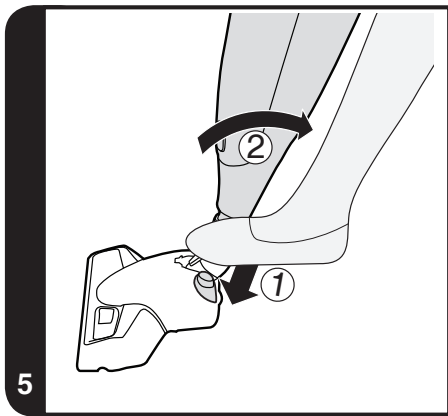
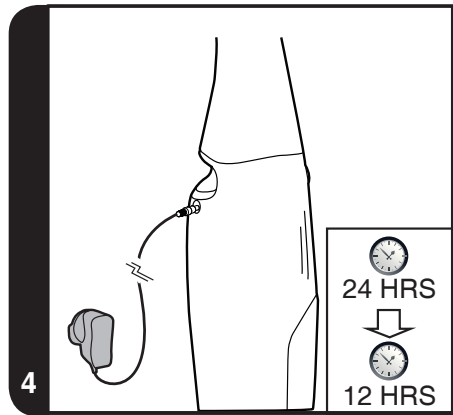
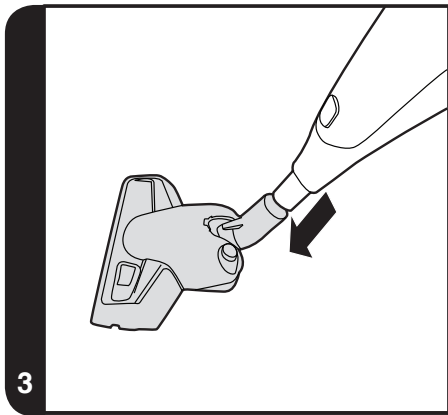
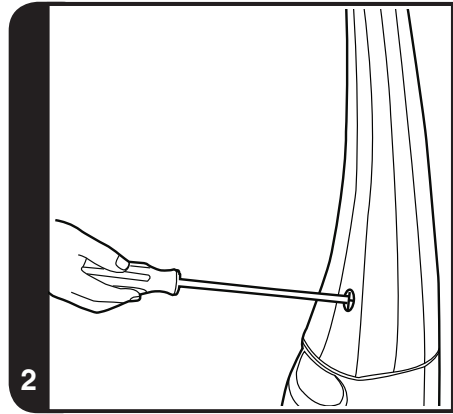
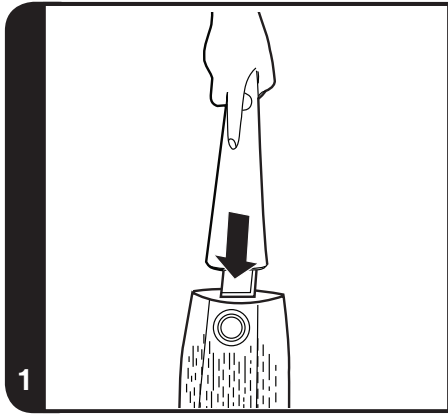
INSTRUCTION MANUAL

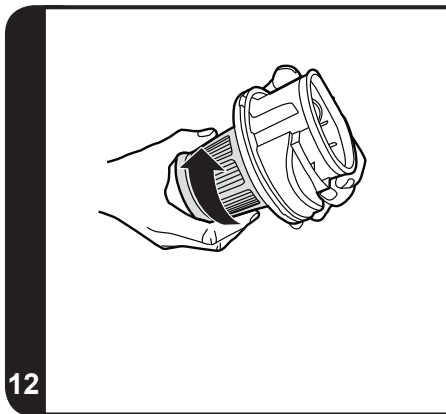
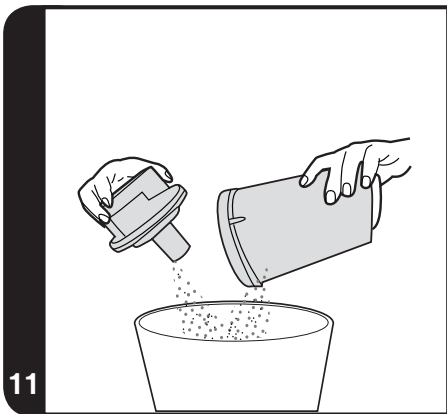
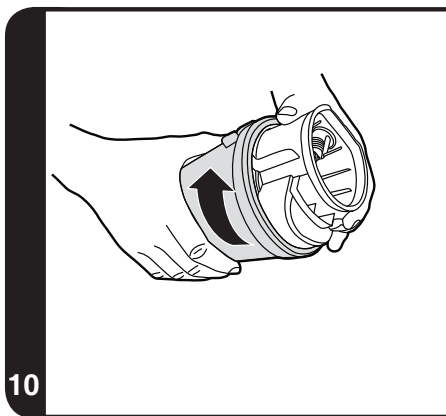
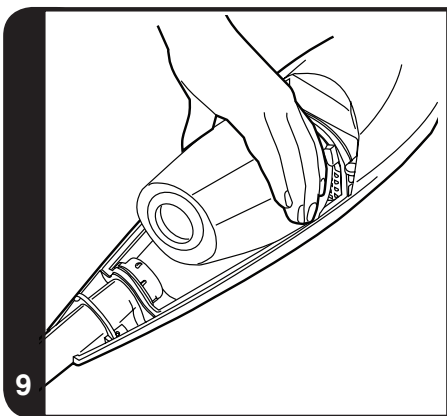
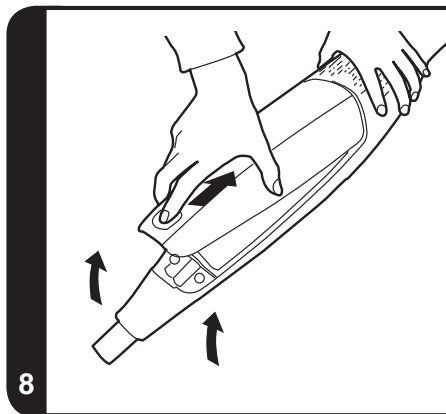
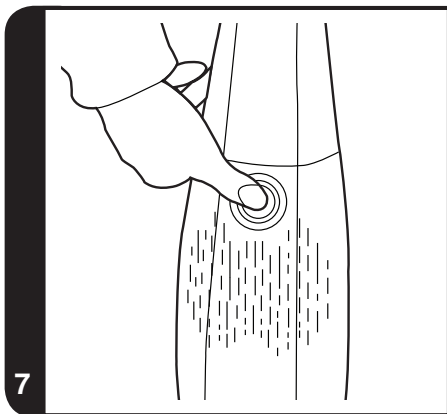


BORN INNOVATIVE®

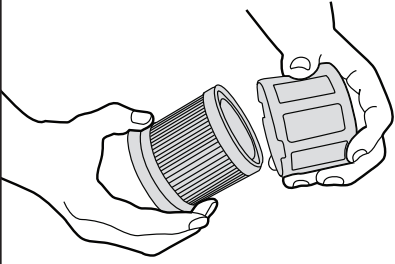








13



14



15



INSTRUCTIONS FOR SAFE USE

This appliance should only be used for domestic cleaning, as described in this user guide. Please ensure that this guide is fully understood before operating the appliance.

Always switch off and remove the charger from the socket before cleaning the appliance or any maintenance task.

This appliance can be used by children aged from 8 years and above and persons with reduced physical, sensory or mental capabilities or lack of experience and knowledge if they have been given supervision or instruction concerning use of the appliance in a safe way and understand the hazards involved. Children shall not play with the appliance. Cleaning and user maintenance shall not be made by children without supervision.

If the power cord is damaged stop using the appliance immediately. To avoid a safety hazard, an authorised Hoover service engineer must replace the power cord.

Use only the original charger supplied with the appliance.

Check that your supply voltage is the same as that stated on the charger.

This appliance is supplied with a double insulated battery charger.

Plug the charger in to suitable socket outlet and connect the power cord connector to the DC socket on the appliance. **[4]**

When charging the appliance, the power switch must be off.

Before first use, charge your appliance for 24 hours.

Do plug in the charger after use to recharge the batteries.

It is normal for the charger to become warm to the touch when charging.

Do not unplug the charger by pulling on the power cord.

Unplug the charger in the event of prolonged absence (holidays, etc.). Recharge appliance again before use as batteries may self discharge over increased periods of storage.

If the appliance is to be disposed of the batteries must first be removed. The appliance must be disconnected from the supply mains when removing the battery. Dispose of the batteries safely. Run the appliance until it stops because the batteries are fully discharged. Used batteries should be taken to a recycling station

and not disposed of with household waste. To remove the batteries, please contact the Hoover Customer Centre or proceed according to the following instructions.

IMPORTANT: Always fully discharge the batteries before removal and ensure the charger is unplugged.

1. Run the cleaner until the batteries are completely empty.
2. Remove the ergonomic handle and the screws, in the main body to open the cleaner.
3. Remove the motor battery housing and disconnect the cables.
4. Remove the batteries from the housing.

NOTE: Should you experience any difficulty in dismantling the unit or for more detailed information on treatment, recovery and recycling of this appliance, please contact your local city office or your household waste disposal service.

DO NOT expose the batteries to a room temperature above 40°C.

Use only attachments, consumables or spares recommended or supplied by Hoover.

Static electricity: Some carpets can cause a small build up of static electricity. Any static discharge is not hazardous to health.

Do not use your appliance out of doors or on any wet surface or for wet pick up.

Do not pick up hard or sharp objects, matches, hot ashes, cigarette ends or other similar items.

Do not spray with or pick up flammable liquids, cleaning fluids, aerosols or their vapours.

Do not run over the power cord when using your appliance or remove the plug by pulling on the power cord.

Do not continue to use your appliance or charger if it appears faulty.

Hoover service: To ensure the continued safe and efficient operation of this appliance we recommend that any servicing or repairs are only carried out by an authorised Hoover service engineer.

Do not use the appliance to clean animals or people.

Do not replace the batteries with non-rechargeable batteries.

Do frequently clean the dust cup and filter assembly.

The Environment:

This appliance is marked according to the European directive 2011/65/EC on Waste Electrical and Electronic Equipment (WEEE). By ensuring this product is disposed of correctly, you will help prevent potential negative consequences for the environment and human health, which could otherwise be caused by inappropriate waste handling of this product. The symbol on the product indicates that this product may not be treated as household waste. Instead it shall be handed over to the applicable collection point for the recycling of electrical and electronic equipment. Disposal must be carried out in accordance with local environmental regulations for waste disposal. For more detailed information about treatment, recovery and recycling of this product, please contact your local city office, your household waste disposal service or the shop where you purchased the product.



This appliance complies with the European Directives 2014/35/EU, 2014/30/EU and 2011/65/EU.

CANDY HOOVER GROUP S.r.l. Via Privata Eden Fumagalli, 20861 Brugherio (MB) Italy

PRODUCT COMPONENTS

- | | |
|---|------------------|
| A. Handle | H. Parking Lock |
| B. ON/OFF Button | I. Charge Socket |
| B1. Battery/Charging Status LED Indicator | J. Bin Cover |
| C. Permanent Exhaust Filter | K. Filter Mesh |
| D. Bin Door | L. Filter |
| E. Bin Door Release Button | M. Dust Bin |
| F. Nozzle | N. Charger |
| G. Nozzle Mode Selector | |

GETTING TO KNOW YOUR CLEANER

1. Remove all components from the packaging. Assemble the cleaner handle and fix in position with the supplied screw. **[1,2]**
2. Open the bin door and check if the dust bin is correctly fitted.
3. Fit the nozzle. **[3]**
4. For first use, charge your cleaner for 24 Hrs and use until completely discharged. After first use the normal charging time is 12 Hrs. **[4]**

USING YOUR CLEANER

Main Cleaner

1. Prepare your cleaner for use by releasing the parking lock on the nozzle. **[5]**
2. Turn the cleaner on by pressing the ON/OFF Button to the following: **[7]**
 - Push one time: turbo power
 - Push second time: normal power
 - Push third time: product off
3. Use the nozzle mode selector to change between carpet and hard floor mode. **[6]**

ON/OFF Button

This cleaner is equipped with a LED indicator. During charging, the indicator will be red, after fully charged, the indicator will change to blue. When the product is working, the indicator will change to blue, and when the batteries are fully discharged, the indicator will flash for around 20 seconds before cleaner switches off automatically.

CLEANER MAINTENANCE

IMPORTANT: Switch cleaner Off and remove Charger from power supply before removing the bin.

EMPTYING THE BAGLESS CASSETTE

- a) Lay the cleaner on a flat surface, pull back the door release button and remove the transparent door. [8]
- b) Remove the bagless cassette.[9]
- c) Remove the bin cover by rotating the container and bin cover in opposite directions. [10]
- d) Empty the debris from the container into a bin. [11] Check if it is necessary to clean the relative filters, as described in the "Maintaining the bagless filters" section.
- e) To refit the bagless cassette and the filters to the product, simply repeat all steps in reverse. [12]

NOTE: Hoover recommends to inspect and wash if necessary, the cassette and the filters after each full container, see maintaining filters section.

MAINTAINING THE BAGLESS FILTERS

- a) To access the washable filter, rotate the mesh filter in the opposite direction from the cassette upper closure and remove the mesh. [13]
- b) Gently tap filters to release excess dust.
- c) Wipe clean the mesh filter and wash thoroughly the filter from the inside under hand warm water until the water runs clean. [14]
- d) Remove excess water by shaking and leave to dry for 24 hours. Refit filters to the cleaner only when completely dry. [15]

DO NOT USE HOT WATER OR DETERGENTS.

IMPORTANT: Ensure the dust bin, bin cover, filter mesh and filter are fitted well before use.

IMPORTANT: For optimum performance, always keep your filter clean. We recommend that the filter should be washed at least once a month.

TROUBLE SHOOTING

Should you have any problem with you cleaner, follow this simple check list before calling the Hoover Customer Service Centre:

A. Cleaner does not switch on

Check if the cleaner is charged.

B. Loss of suction or no suction

Empty the dust container and wash the filter.

Remove nozzle and check for any blockages in the duct.

C. Batteries cannot be charged

This may be a result of very long storage periods (over half year).

Contact Hoover customer service to arrange battery replacement.

If the problem persists contact the Hoover customer service centre.

HOOVER SPARES AND CONSUMABLES

Always replace parts with genuine HOOVER spares. These are available from your local HOOVER dealer or direct from HOOVER. When ordering parts always quote your model number.

IMPORTANT: The battery in this cleaner is guaranteed for 6 months from purchase. After 6 months the customer is liable for the cost of a new battery which will be fitted free of charge by an authorised HOOVER engineer.

YOUR GUARANTEE

The guarantee conditions for this appliance are as defined by our representative in the country in which it is sold. Details regarding these conditions can be obtained from the dealer from whom the appliance was purchased. The bill of sale or receipt must be produced when making any claim under the terms of this guarantee.

Subject to change without notice.



®

BORN INNOVATIVE

PRINTED IN P.R.C.
48022184/01