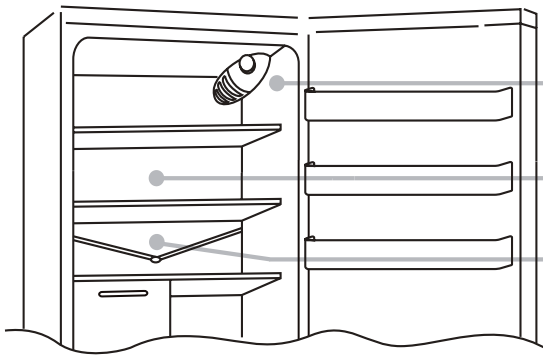


## COMBINED AND FROST FREE COMBINED

### CONTROL PANEL

(figure 1)



The thermostat box to control the appliance is located inside the fridge compartment on the top right. To check whether the appliance is functioning, make sure that the thermostat knob is not set on "0". Adjust the knob according to the desired temperature in the fridge.

In this product the freezer compartment is automatically defrosted. A small amount of frost or drops of water on the back of the fridge compartment when the fridge is working is normal.

Make sure the water outlet is always clean. Make sure foods do not touch the back or sides of the fridge compartment

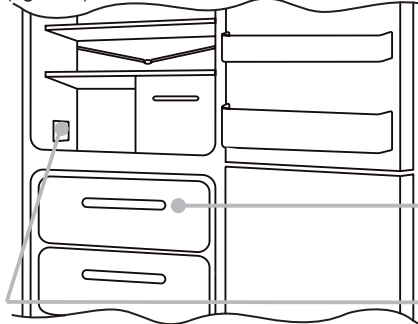
**Important: If the room temperature is very warm, the appliance may work continuously and a layer of frost will deposit on the back of the fridge compartment. In this case, turn the knob to lower settings.**

### FREEZING OF THE FREEZER COMPARTMENT

Place the foods to be frozen in the drawer. At the start of the freezing process, so as not to make the fridge compartment excessively cold, it may be necessary to turn the thermostat knob back, according to the load and room temperature. Once the freezing process is completed, return the thermostat knob to the usual value. The rating plate states the maximum quantity of foods that can be frozen, (see figure 2).

### DEFROSTING OF THE FREEZER COMPARTMENT

(figure 2)



In case of a fridge with FROST FREE technology, the freezer compartment does not need to be defrosted because this product is equipped with an automatic system which prevents ice from forming;

In case of a version without FROST FREE technology, it is recommended to manually defrost the product when the layer of frost is more than 3 mm thick, by setting the knob on "0". Open the door and remove the foodstuffs, making sure to store them in a cool place. Leave the door open as long as is necessary for the layer of frost to melt. Dry the inside of the freezer with a sponge/cloth. Reposition the foodstuffs and reset the knob to the usual values.

**N.B.: This is the rating plate. If you need to contact our Service Department in the event of faults, remember to give them the information on the plate.**

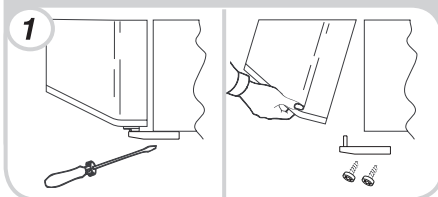
**N.B.: For better air circulation, leave some room between the foodstuffs. In case of models with FROST FREE technology, avoid obstructing the cooling air vents.**

**N.B.: To TEST consumption and preservation standards, remove all drawers except for the bottom one.**

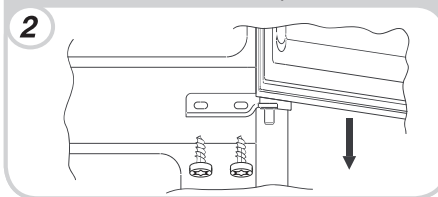
### REVERSING THE OPENING OF THE DOORS

Place the appliance on the floor or at a 45° angle, since it is necessary to work on the bottom of the appliance.

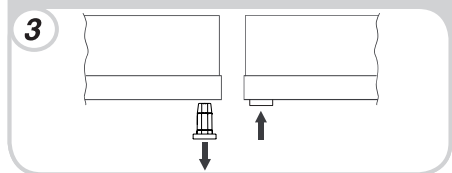
Remove the bottom hinge by loosening the screws, then remove the lower door.



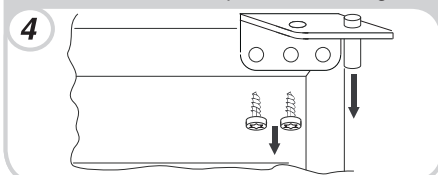
Remove the middle hinge by loosening the screws, then remove the top door.



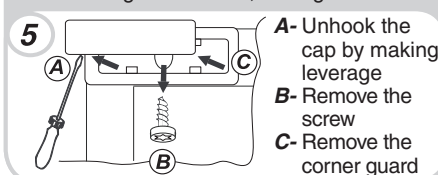
Remove the bushes on the right-hand side of the doors and mount them back on the left-hand side.



Remove the top hinge by loosening the screws. Unscrew the pin from the hinge.

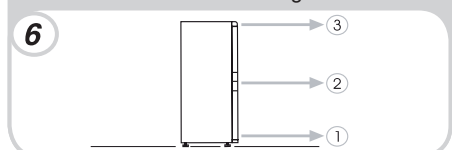


Disassemble and move the corner guide from left to the right-hand side, turning it 180°.

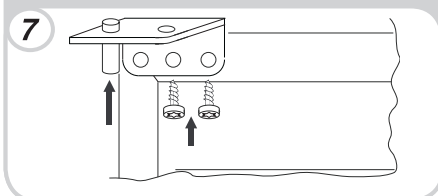


**A-** Unhook the cap by making leverage  
**B-** Remove the screw  
**C-** Remove the corner guard

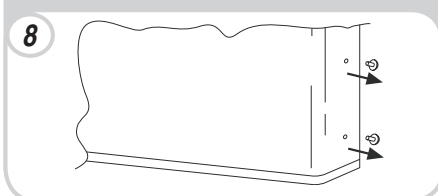
Remount the hinges and doors working from bottom to top, 1 - 2 - 3. Also remount the spacer washers between door and hinge.



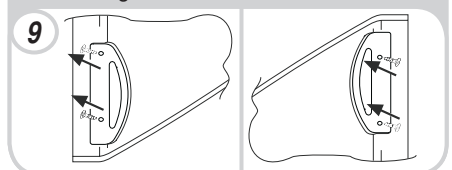
While fixing the top hinge on the left-hand side, tighten the screws and screw the pin back on in the left hole.



In order to reverse the vertical handles, if any, remove the outer caps from the right-hand side of the doors.



Unscrew the handles from the left-hand side and move them to the right-hand side, then position the outer caps removed previously from the right-hand side to the left-hand side.



Put the appliance back in an upright position and wait two hours before turning it on.

**N.B.** For the doors to be correctly aligned, it is necessary to operate on the middle hinge.