



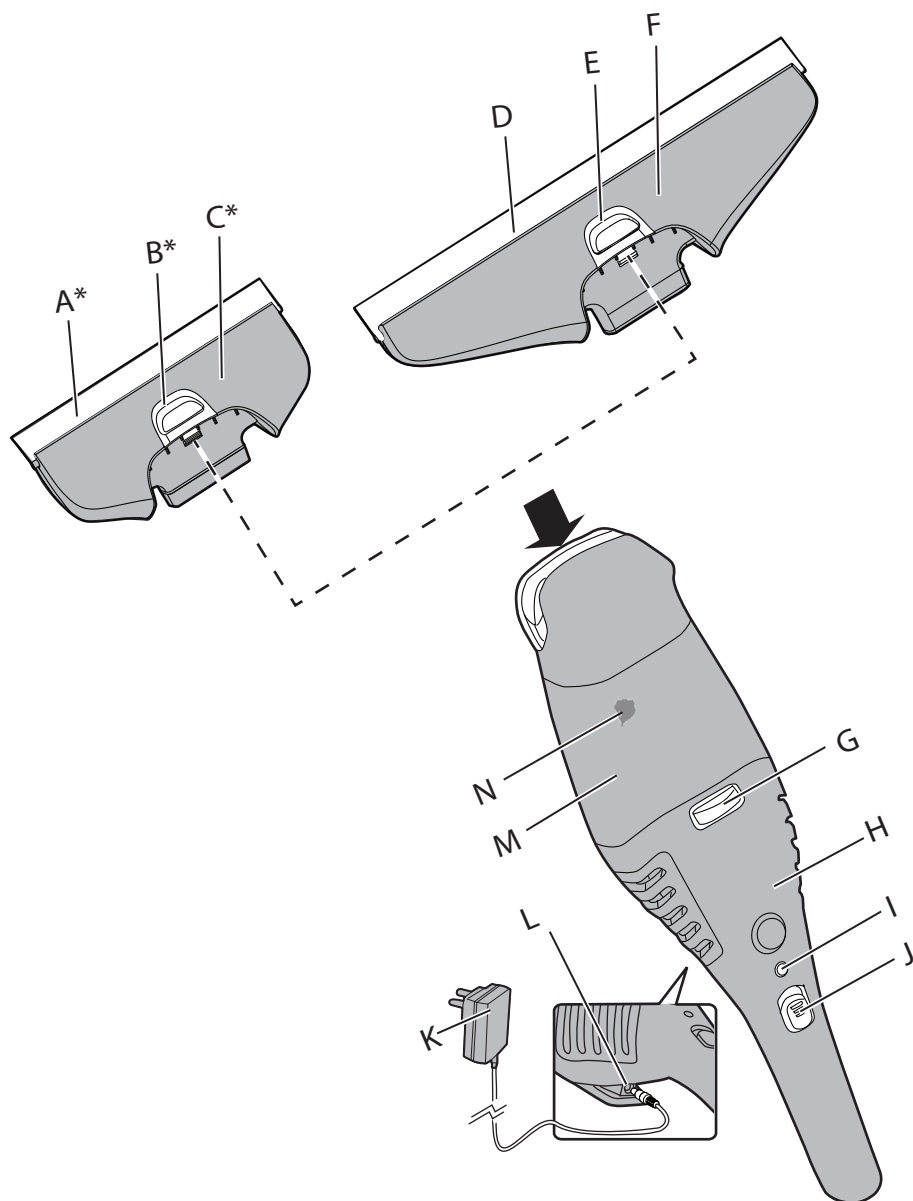
HOOVER

INSTRUCTION MANUAL



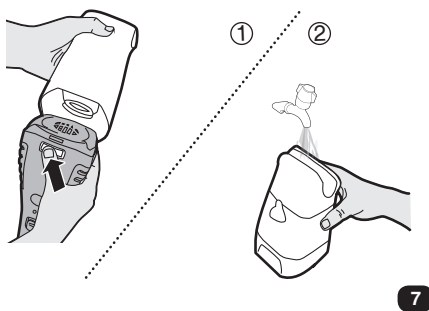
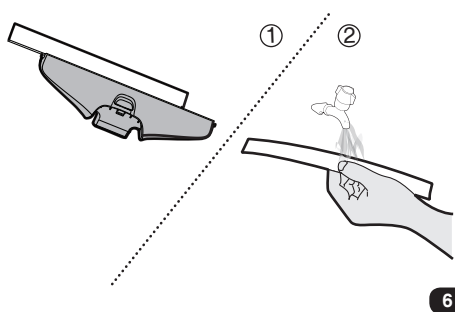
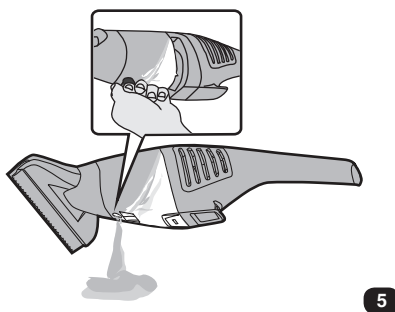
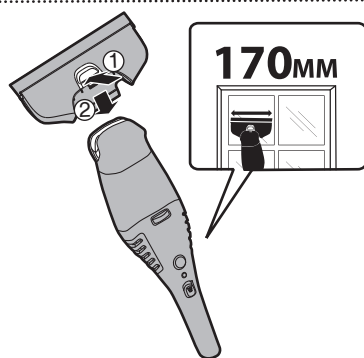
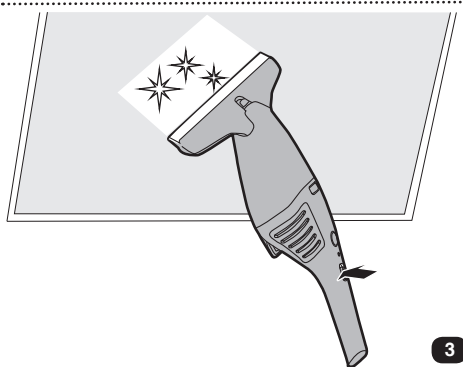
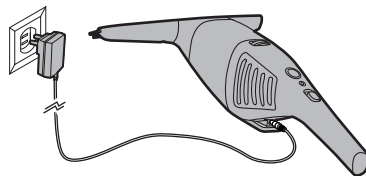
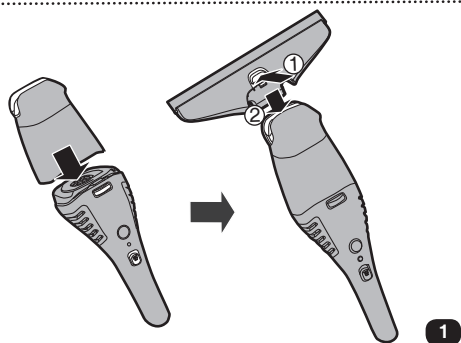
GENERATION FUTURE





* Available only on certain models.







PLEASE READ THESE INSTRUCTIONS THOROUGHLY

This appliance should only be used for domestic cleaning, as described in this user guide. Please ensure that this guide is fully understood before operating the appliance.

Always switch off and remove the charger from the socket before cleaning the appliance or any maintenance task.

This appliance can be used by children aged from 8 years and above and persons with reduced physical, sensory or mental capabilities or lack of experience and knowledge if they have been given supervision or instruction concerning use of the appliance in a safe way and understand the hazards involved. Children shall not play with the appliance. Cleaning and user maintenance shall not be made by children without supervision.

If the power cord is damaged stop using the appliance immediately. To avoid a safety hazard, an authorised Hoover service engineer must replace the power cord.

Battery charging

Never touch the charger with wet hands.

Use only the original charger supplied with the appliance.

Check that your supply voltage is the same as that stated on the charger.

Before being charged the main product must be switched off. Never charge the batteries in temperatures above 37°C or below 0°C. Plug the charger delivered with this appliance into a suitable socket. [2] Insert the cable plug into plug socket on the main product. [2]

NOTE: When being charged, the charging indicator will be illuminated. For longer running time, the first battery charge should be 24 hours. It is normal for the charger to become warm to the touch when charging. We suggest recharging the appliance after each use.

If the operating time reduces after repeated use, let the cleaner run until it stops, then recharge for 24 hours and repeat this monthly for best results.

Use only attachments, consumables or spares recommended or supplied by Hoover.

Do not pick up hard or sharp objects, matches, hot ashes, cigarette ends or other similar items.

Do not spray with or pick up flammable liquids, cleaning fluids,



aerosols or their vapours.

Do not continue to use your appliance or charger if it appears faulty.

Hoover service: To ensure the continued safe and efficient operation of this appliance we recommend that any servicing or repairs are only carried out by an authorised Hoover service engineer.

Do not use the appliance to clean animals or people.

Do not immerse the complete cleaner in liquids, only the nozzle end.

Do not pick up large volumes of liquid.

Do not replace the batteries with non-rechargeable batteries.

If the appliance is to be disposed of the batteries must first be removed. The appliance must be disconnected from the supply mains when removing the battery. Dispose of the batteries safely. Run the appliance until it stops to ensure the batteries are fully discharged. Used batteries should be taken to a recycling station and not disposed of with household waste. To remove the batteries, please contact the Hoover customer centre or proceed according to the following instructions.

Battery removal

Remove dust container. Unscrew 4 screws and open the unit. Remove motor assembly and disconnect the cables. Remove the batteries.

NOTE: Should you experience any difficulty in dismantling the unit or for more detailed information on treatment, recovery and recycling of this appliance, please contact your local city office or your household waste disposal service.

INTENDED PURPOSE FOR THIS APPLIANCE

This appliance is for personal use only and is to be used to remove moisture from clean surfaces, such as windows, marble and mirrors. This appliance must never be used to Vacuum dust or debris.

This appliance is not intended to be used on horizontal surfaces, in the event of using on Horizontal surfaces or at a side angle please ensure maximum fluid pick up of 15ml.

Only use conventional window detergents with this appliance (no foam detergent or spirit). We recommend you purchase window Concentrate cleaning agent supplied by Hoover.

Please refer to Hoover Consumables section.

Please use this appliance only with spare parts or consumables approved by Hoover.

WARNING: Use only Hoover cleaning solution. Using other solution brands may cause excess foaming and will prevent the cleaner from working effectively.

Using other solutions may affect your warranty.



FEATURES

- | | |
|---------------------------------|-----------------------|
| A. 170mm Nozzle Lip * | H. Main Product |
| B. 170mm Nozzle Release Button* | I. Charging Indicator |
| C. 170mm Nozzle * | J. On/Off Switch |
| D. 280mm Nozzle Lips | K. Charger With Cable |
| E. 280mm Nozzle Release Button | L. Plug Socket |
| F. 280mm Nozzle | M. Tank |
| G. Tank Release Button | N. Tank Emptying Plug |

* Available only on certain models.

HOW TO USE

PREPARATIONS

Nozzle assembly [1]

1. Attach the tank to the main product body ensuring the Tank release button is fully engaged and locked.
2. Attach the nozzle to the tank and ensure the nozzle release button is locked.

BATTERY CHARGING

WARNING: Please check charger is suitable for your main supply before operation. Before being charged main product must be turn off.

Never charge the batteries in temperatures above 37°C or below 0°C.

Plug the charger delivered with this appliance into a suitable socket. [2]

Insert the cable plug into plug socket on main product. [2]

NOTE: When being charged, charging indicator will be lighted. For longer running time, the first time battery should be charged 24 hours. It is normal for the charger to become warm to the touch when charging.

We suggest recharging main product each time after finishing your work. If the operating time reduces after repeated use, let the cleaner run until it stops, then recharge for 24 hours and repeat this monthly for best results.

OPERATING

Cleaning

1. Switch the on/off switch to the on position. [3]
2. Hold the nozzle against the surface being cleaned and operate the appliance from top to bottom to remove excess moisture.[3]

NOTE: For hard to reach area's, this appliance can be used up-side down or at a limited angle.

The appliance should be switched off when not in operation as this will maximise the running time.

Nozzles replacement* [4]

1. Ensure the appliance is switched off.
2. Press nozzle release button and remove the nozzle.
3. Insert the replacement nozzle into the tank and ensure the release button is locked.

* Available only on certain models.

Emptying the Tank [5]

1. Empty the tank once it has reached the Max level indicated.



2. Ensure the appliance is switched off.
3. Pull out the tank emptying plug and empty the tank.
4. Once the tank is empty, refit the plug.

Cleaning the Appliance [6, 7]

1. Ensure the appliance is switched off.
2. Remove the nozzle from main product and pull out the nozzle lip, clean under running water.
3. Remove the tank from main product body by pressing the tank release button, wash the tank with clean water to remove any dirt or debris.

WARNING: The main product assembled with battery must not be cleaned under running water! Ensure all cleaned components are completely dry prior to assembly.

Storage of Appliance

Store the appliance with the storage hook in a dry area.

TROUBLE SHOOTING

Appliance does not start

1. Recharge main product for 16 hours, the charging indicator will be illuminated.
2. If the charging indicator is not illuminated during charging, contact your dealer.

Streaks Remain after cleaning

1. Clean the nozzle lip.
2. Remove the nozzle lip from side and replace in position upside down.
3. Replace the nozzle lip if required.
4. Check the dosing of the detergent.

Water is leaking from the exhaust area

Empty the tank.

DISPOSAL OF APPLIANCES

End of product life battery disposal.

If the cleaner is to be disposed of the batteries should be removed. Used batteries should be taken to a recycling station and not disposed with household waste.

IMPORTANT: Always fully discharge the batteries before removal.

Battery removal

Remove dust container. Unscrew 4 screws and open the unit. Remove motor assembly and disconnect the cables. Remove the batteries.

NOTE: Should you experience any difficulties in dismantling the unit or for more detailed information about treatment, recovery and recycling of this product, please contact your local city office, your household waste disposal service.

IMPORTANT INFORMATION

Hoover spares and Consumables

Always replace parts with genuine Hoover spares. These are available from your local Hoover dealer or direct from Hoover. When ordering parts always quote your model number.

Mop - JWCMP2 (39800019)
Concentrate cleaning agent - JWCCA420 (39800020)
280mm Nozzle Lips - JWCLLN2 (39800021)
170mm Nozzle Lips - JWCLNN2 (39800022)
170mm Nozzle - JWCNNO1 (39800023)
Spray Bottle - JWCSPRAY (39800025)



Should any faults occur with your cleaner during the first 12 months, contact the Hoover Customer Helpline on the number below.

Tel. : 08444 995 599

Email: customer.services@hoovercandy.com

Quality

Hoover's factories have been independently assessed for quality. Our products are made using a quality system which meets the requirements of ISO 9001.

The Environment:

The symbol on this appliance indicates that this appliance may not be treated as household waste. Instead it must be handed over to the applicable collection point for the recycling of electrical and electronic equipment. Disposal must be carried out in accordance with local environmental regulations for waste disposal. For more detailed information about treatment, recovery and recycling of this appliance, please contact your local city office, your household and waste disposal service or the shop where you purchased the appliance.



This product complies with the European Directives 2006/95/EC, 2004/108/EC and 2011/65/EC.

HOOVER Limited, Pentrebach, Merthyr Tydfil, Mid Glamorgan, CF48 4TU, UK

Guarantee statement

The guarantee conditions for this appliance are as defined by our representative in the country in which it is sold. Details regarding these conditions can be obtained from the dealer from whom the appliance was purchased. The bill of sale or receipt must be produced when making any claim under the terms of this guarantee.

Subject to change without notice.



®

GENERATION FUTURE

PRINTED IN P.R.C.
48013054

HOOVER



Artwork Number: Issue:

0

Title:

User manual

Created: Date:

Cris

Modified: Date:

Cris 2014/07/01

Engineering Approved: Date:

Hoover Ltd.
Industrial Design Department
5th Floor, 288 Dongping Street,
Suzhou Industrial Park, Suzhou,
PRC 215123
Tel: 0512-82181000 Ext 225

Note:
Artwork not to be used
unless approved by
Engineering.

MANUAL LABEL

Printing colour :

Size : 45x30mm 黑 (black)

Material: Adhesiver sticker (不覆膜不干胶)

Background Colour: White (白色底)

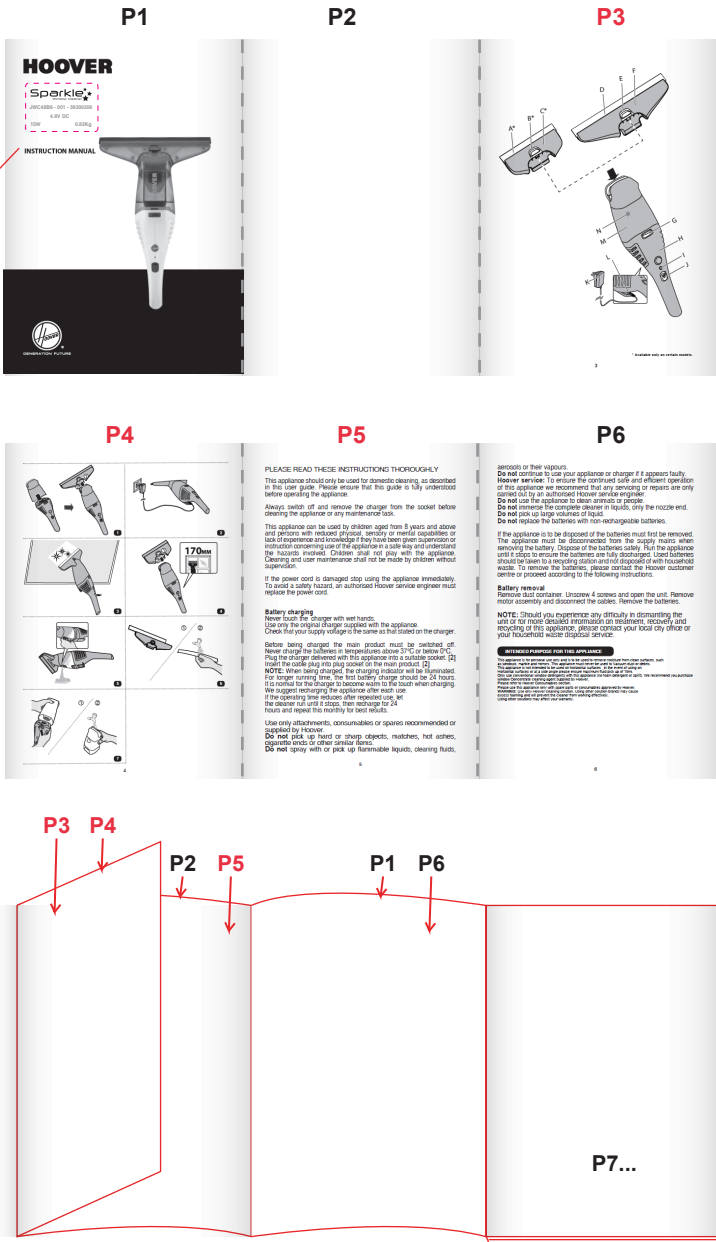
USER MANUAL

Printing colour : 黑 (black)

Size : 210x148mm

Material: 1.cover= 铜版纸 coated paper(120g)

2.inside pages= 双胶纸 offset paper(80g)



Folding method(折页方法,
如需求插白页一文字的最后面)