

ECO FUNCTION

Eco mode can be used for most floor coverings, Hard floor or Carpet but it is suggested NOT to be used when using the the hose and accessories for above floor cleaning.

Simply activate Eco mode after switching on to reduce the power and extend the battery life.

ON

ECO MODE LOW POWER

4

Above Floor Cleaning

OFF

ON

DO NOT USE CARPET MODE WHEN USING THE HOSE/TOOLS

OFF

5

Bin Empty

OFF

6

Filter Cleaning

OFF

7

Safety Protection System

OFF

OFF

OFF

BORN INNOVATIVE

APPLY MANUAL LABEL HERE

User Manual

Please read the 'Instructions for Safe Use and Fittings' before using your product.

www.hoover.co.uk

1

Contents & Assembly

2

The Battery

3

Using Your cleaner

4

Above Floor Cleaning

5

Emptying Your Bin

6

Filter Cleaning

7

Safety Protection System

This appliance should only be used for domestic cleaning, as described in this user guide. Please ensure that this guide is fully understood before operating the appliance.

This appliance can be used by children aged from 8 years and above and persons with reduced physical, sensory or mental capabilities or lack of experience and knowledge if they have been given supervision or instruction concerning use of the appliance in a safe way and understand the hazards involved. Children shall not play with the appliance. Cleaning and user maintenance shall not be made by children without supervision.

Use only the original charger supplied with the appliance.

Plug the charger in to suitable socket outlet and connect the charger jack plug to the appliance.

The battery pack LED light will flash White during charging and will illuminate continuous White when fully charged.

Unplug the charger in the event of prolonged absence (holidays, etc.). Recharge appliance again before use as batteries may self discharge over increased periods of storage.

Static electricity: some carpets can cause a small build up of static electricity. Any static discharge is not hazardous to health.

Do not use your appliance out of doors or on any wet surface or for wet pick up. Do not pick up hard or sharp objects, matches, hot ashes, cigarette ends

or other similar items. Do not spray with or pick up flammable liquids, cleaning fluids, aerosols or their vapours. Do not run over the power cord when using your appliance or remove the plug by pulling on the power cord.

Hoover service: To ensure the continued safe and efficient operation of this appliance we recommend that any servicing or repairs are only carried out by an authorised Hoover service engineer.

If the appliance is to be disposed of the batteries must first be removed. The appliance must be disconnected from the supply mains when removing the battery. Dispose of the batteries safely. Run the appliance until it stops because the batteries are fully discharged. Used batteries should be taken to a recycling station and not disposed of with household waste. To remove the batteries, please contact the Hoover Customer Centre or proceed according to the following instructions.

jack plug from the appliance.
Press the battery pack release button and slide to remove.

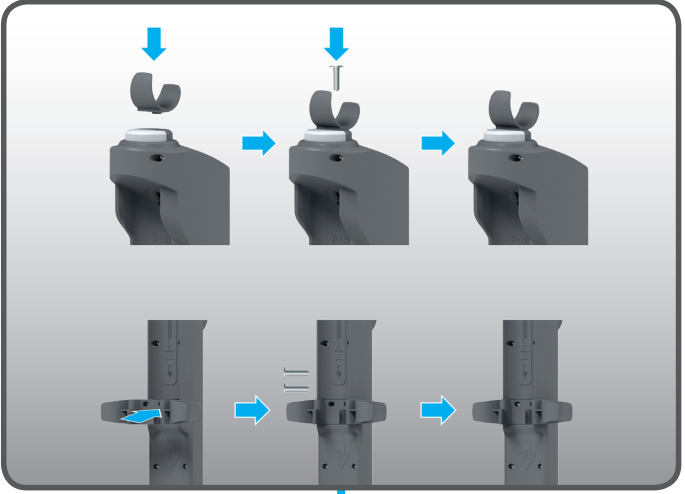
Note: Should you experience any difficulty in dismantling the unit or for more detailed information on treatment, recovery and recycling of this appliance, please contact your local city office or your household waste disposal service.

To do this, open the agitator release flap and remove the soft strip. Then grip one wiper blade, by inserting one end into the rear slot and slide it in until fully home. Repeat these operations for the second wiper blade and slide it in the front slot. Lock the agitator release flap.


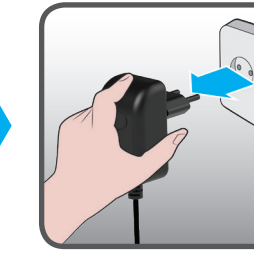
This appliance is marked according to the European directive 2011/65/EC on Waste Electrical and Electronic Equipment (WEEE). By ensuring this product is disposed of correctly, you will help prevent potential negative consequences for the environment and human health, which could otherwise be caused by inappropriate waste handling of this product. The symbol on the product indicates that this product may not be treated as household waste. Instead it shall be handed over to the applicable collection point for the recycling of electrical and electronic equipment. Disposal must be carried out in accordance with local environmental regulations for waste disposal. For more detailed information about treatment, recovery and recycling of this product, please contact your local city office, your household waste disposal service or the shop where you purchased the product.

CANDY HOOVER GROUP S.r.l. Via Privata Eden Fumaqalli, 20861 Brugherio (MB) Italy

Contents & Assembly



The Battery



**0-5%
CHARGE THE
BATTERY**

Using your Cleaner

