



BORN INNOVATIVE

HOOVER

Synthesis Activ

Cordless

STC18LI - 001 - 39001574

18V DC

360W

5.4Kg

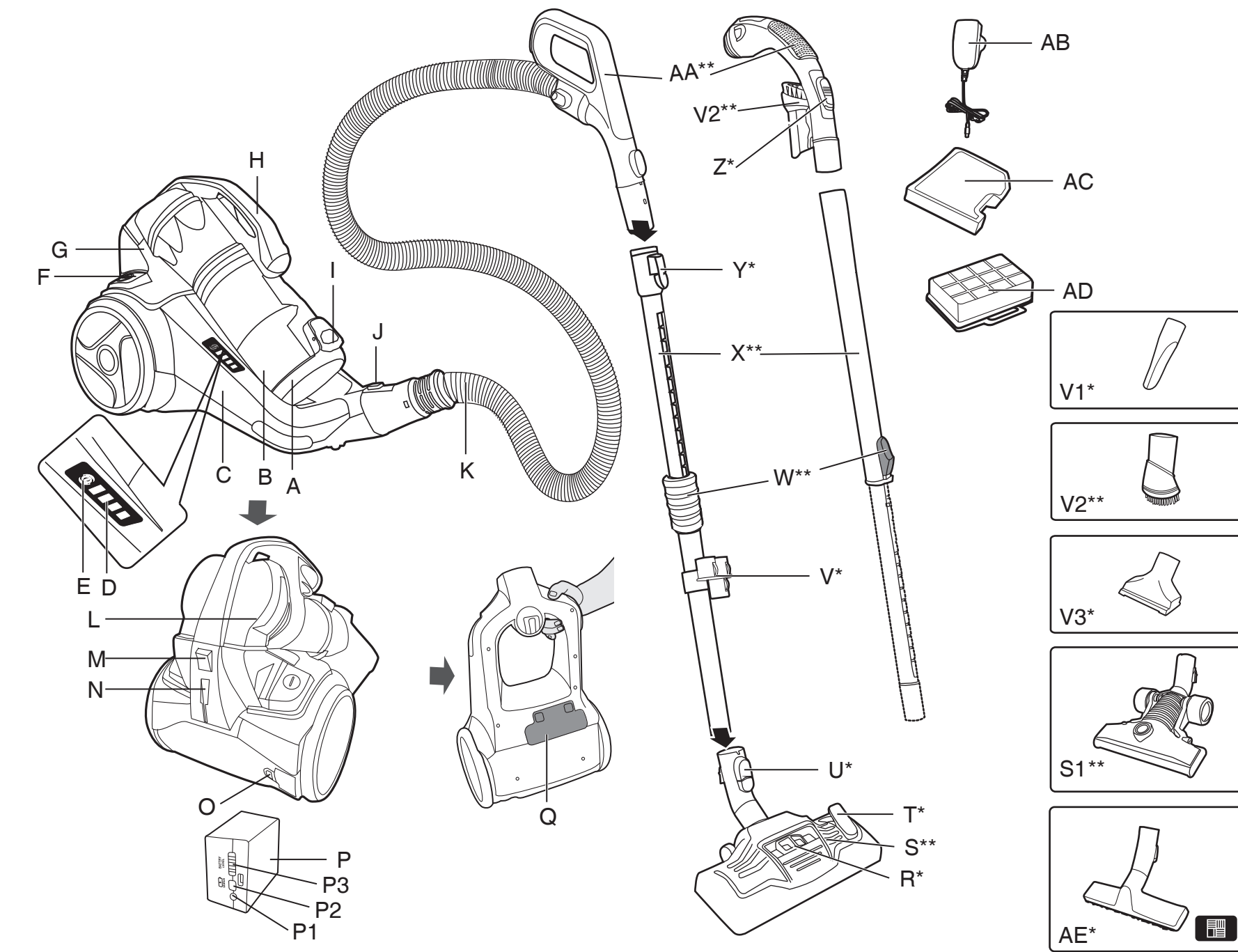


USER MANUAL

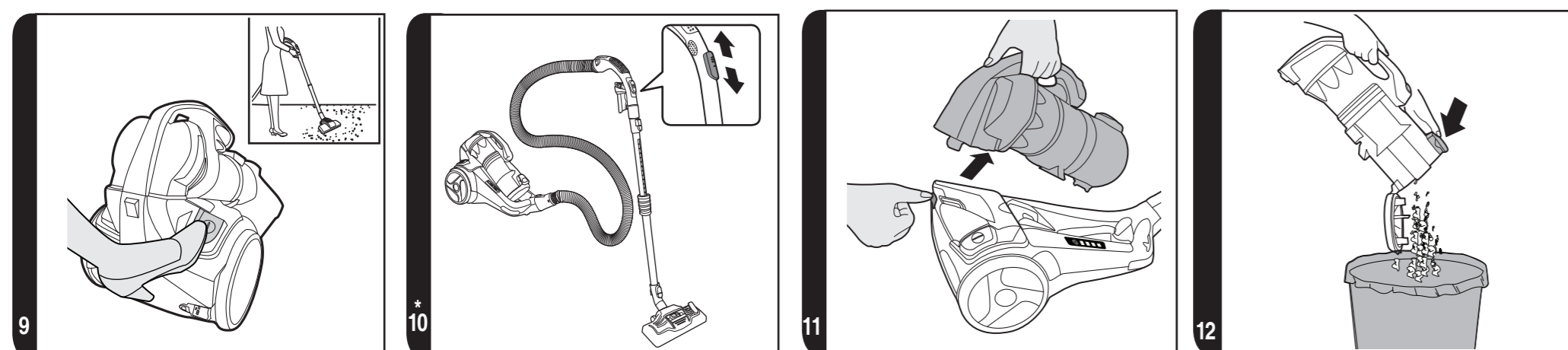
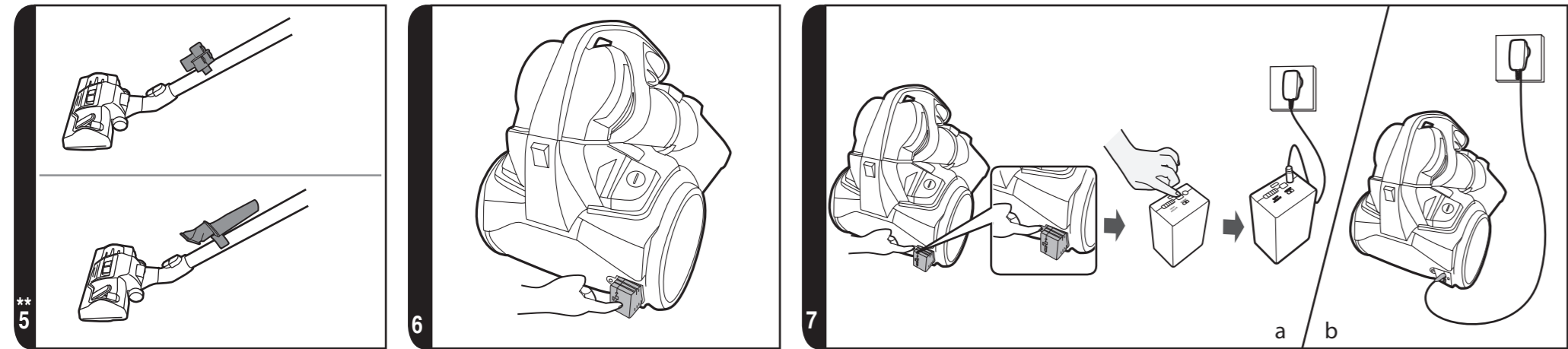
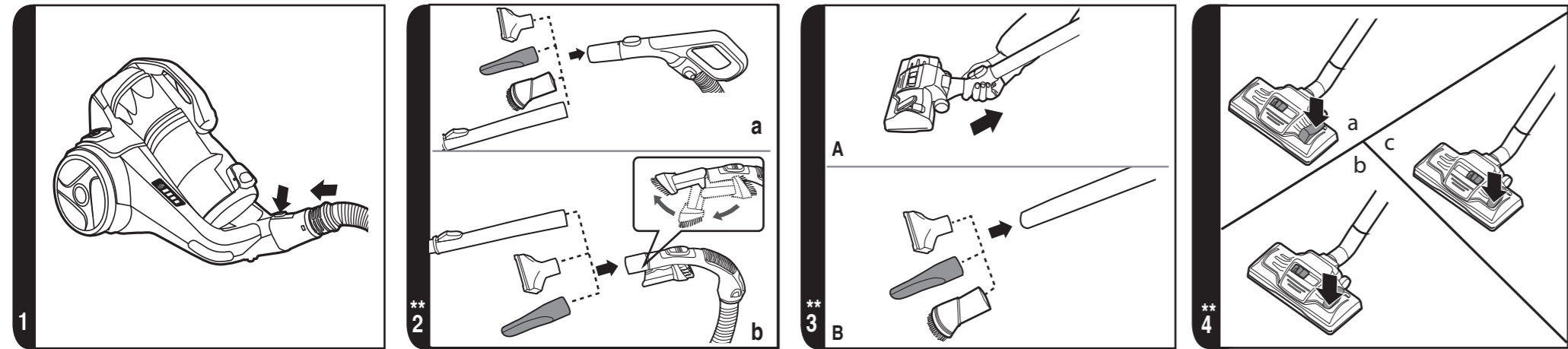
PRINTED IN P.R.C.
48022156



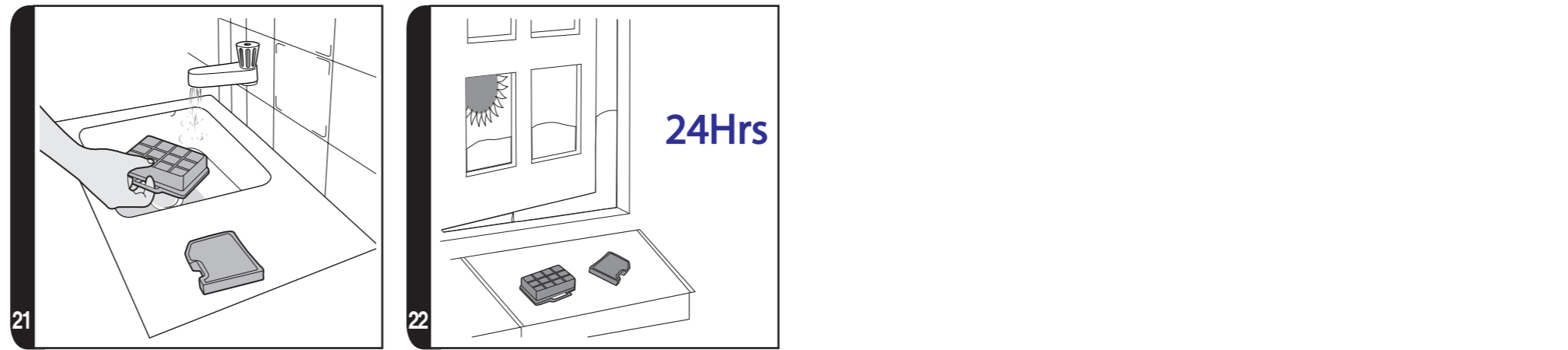
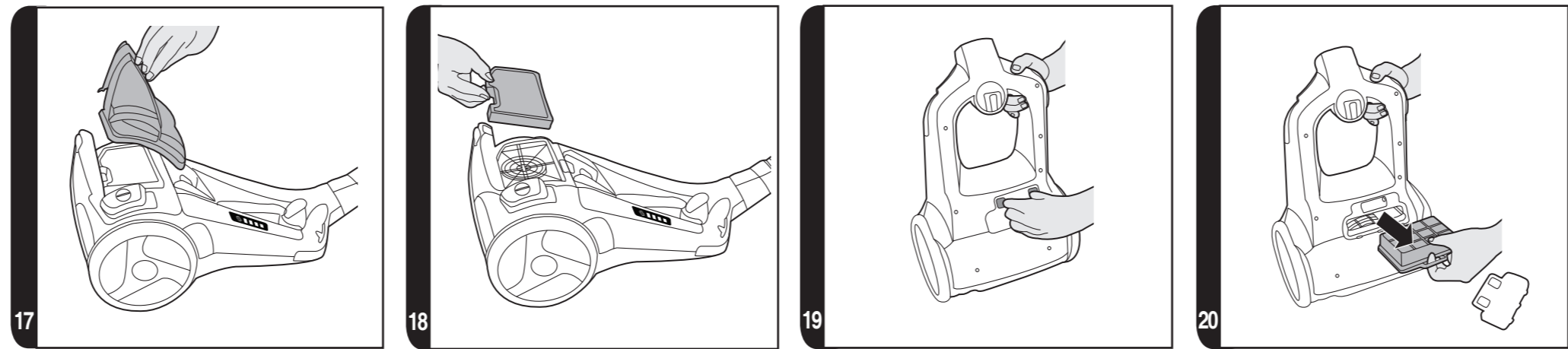
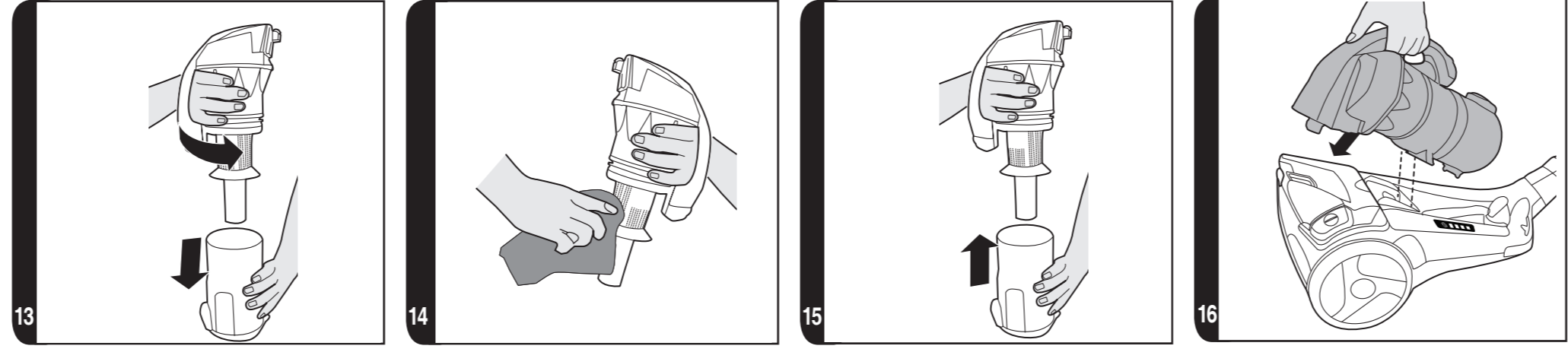
BORN INNOVATIVE



*Certain models only **May vary according to the model



*Certain models only **May vary according to the model



*Certain models only **May vary according to the model

24Hrs

INSTRUCTIONS FOR SAFE USE

This appliance should only be used for domestic cleaning, as described in this user guide. Please ensure that this guide is fully understood before operating the appliance.

Do not leave the appliance plugged in. Always switch off and remove the plug from the socket after use, or before cleaning the appliance or any maintenance task.

This appliance can be used by children aged from 8 years and above and persons with reduced physical, sensory or mental capabilities or lack of experience and knowledge if they have been given supervision or instruction concerning use of the appliance in a safe way and understand the hazards involved. Children shall not play with the appliance. Cleaning and user maintenance shall not be made by children without supervision.

If the power cord is damaged stop using the appliance immediately. To avoid a safety hazard, an authorised HOOVER service engineer must replace the power cord.

Keep hands, feet, loose clothing and hair away from rotating brushes.

Use only the original charger supplied with the appliance.

Check that your supply voltage is the same as that stated on the charger.

This appliance is supplied with a double insulated battery charger which is only suitable for insertion in a 230V (UK 240V) socket outlet.

Plug the charger in to suitable socket outlet and connect the charger jack plug to the appliance.

For first use, charge the battery pack for 5.5 hours.

To charge the battery pack, detach it from the cleaner

by pressing the battery pack release pedal and plug the charger into the charging port located on the battery pack.

The battery pack can also be charged when inserted into the cleaner. [7]

Ensure that the cleaner is switched off during charging.

When the charger is connected, the LED lights battery indicator on the battery pack will illuminate in turn as the battery charges, until all four lights are illuminated.

Once fully charged, the four LED lights will remain lit and will turn off after 5 minutes.

Re-connect the appliance to the charger after use to recharge the battery.

Never charge the batteries in temperatures above 45°C or below 0°C.

It is normal for the charger to become warm to the touch when charging. When charging the cleaner, it will automatically turn off.

Do not unplug the charger by pulling on the power cord.

Unplug the charger in the event of prolonged absence (holidays, etc.). Recharge appliance again before use as batteries may self discharge over increased periods of storage.

If the appliance is to be disposed of the batteries must first be removed. The appliance must be disconnected from the supply mains when removing the battery. Dispose of the batteries safely. Run the appliance until it stops because the batteries are fully discharged. Used batteries should be taken to a recycling station and not disposed of with household waste. To remove the batteries, please contact the Hoover Customer Centre or proceed according to the

following instructions.

IMPORTANT: Always fully discharge the batteries before removal and ensure the charger is unplugged.

Run the cleaner until the batteries are completely empty.

Remove the charger jack plug from the appliance.

Push the battery release button to eject the battery pack. [7]

Remove the battery pack slowly from the slot. [7]

NOTE: Should you experience any difficulty in dismantling the unit or for more detailed information on treatment, recovery and recycling of this appliance, please contact your local city office or your household waste disposal service.

Do not replace the batteries with non-rechargeable batteries.

Use only attachments, consumables or spares recommended or supplied by HOOVER.

Static electricity: Some carpets can cause a small build up of static electricity. Any static discharge is not hazardous to health.

Do not use your appliance out of doors or on any wet surface or for wet pick up.

Do not pick up hard or sharp objects, matches, hot ashes, cigarette ends or other similar items.

Do not spray with or pick up flammable liquids, cleaning fluids, aerosols or their vapours.

Do not run over the power cord when using your appliance or remove the plug by pulling on the power cord.

Do not continue to use your appliance if it appears faulty.

HOOVER service: To ensure the continued safe and efficient operation of this appliance we recommend that any servicing or repairs are only carried out by an authorised HOOVER


service engineer.


Do not stand on or wrap the cord around arms or legs when using your appliance.

Do not use the appliance to clean animals or people.

Do not position the appliance above you when cleaning the stairs.

The Environment

The symbol on this appliance indicates that this appliance may not be treated as household waste. Instead it must be handed over to the applicable collection point for the recycling of electrical and electronic equipment. Disposal must be carried out in accordance with local environmental regulations for waste disposal.  For more detailed information about treatment, recovery and recycling of this appliance, please contact your local city office, your household and waste disposal service or the shop where you purchased the appliance.

 This appliance complies with the European Directives 2014/35/EU, 2014/30/EU and 2011/65/EU.

CANDY HOOVER GROUP S.r.l. Via Privata Eden Fumagalli, 20861 Brugherio (MB) Italy

GETTING TO KNOW YOUR CLEANER

A. Dust Container Flap	Q. Exhaust Filter Cover
B. Dust Container	R. Carpet and Floor Nozzle Slider*
C. Main Cleaner	S. Carpet and Floor Nozzle**
D. LED Lights Battery Indicator	S1. Hard Floor Nozzle**
E. Turbo Power Control Button	T. Floor Type Selector Pedal*
F. On/Off Pedal	U. Carpet and Floor Nozzle Latch*
G. Pre-motor Filter Cover	V. Accessories Holder*
H. Bin Handle	V1. Crevice Tool*
I. Bin Flap Release Button	V2. Dusting Brush**
J. Hose End Latch Button	V3. Furniture Nozzle*
K. Hose	W. Telescopic Tube Adjuster**
L. Dust Container Top	X. Telescopic Tube**
M. Bin Release Latch	Y. Telescopic Tube Latch*
N. Parking Slot	Z. Suction Regulator*
O. Battery Release Button	AA. Hose Handle**
P. Battery Pack	AB. Charger
P1. Charger Port	AC. Pre-motor Filter
P2. Battery Charge Status Button	AD. Exhaust Filter
P3. LED Lights Battery Indicator	AE. Parquet Nozzle*

ASSEMBLING YOUR CLEANER

Remove all components from the packaging.

1. Fit the bin assembly to the cleaner making sure the hook has been positioned correctly in the main body [16], then lock the container in place by pushing the bin handle down until the latch connects with the main body of the cleaner, you will hear a click when fully connected.
2. Insert the battery pack by pushing it into the cleaner slot ensuring it is fixed in position, you will hear a click when fully connected. [6]
3. Connect the hose to the cleaner main body, ensuring it clips and locks into position. To release the hose simply press the hose end latch button on the hose end and pull. [1]
4. Connect the hose handle to the upper end, [2a] or accessories if required. [2b]
5. Connect the tube lower end to the carpet and floor nozzle** [3a] or accessories if required. [3b]

6. The cleaning accessory tools can be stored after use on the underside of the extension tube, using the accessory holder** provided. [5]

CHARGING THE BATTERY PACK AND USE

For first use, charge the battery pack for 5.5 hours.

To charge the battery pack, detach it from the cleaner by pressing the battery pack release button [7a] and plug the charger into the charging port located on the battery pack. The battery pack can also be charged when it is inserted into the cleaner. [7b] When the charger is connected, the LED lights battery indicator on the battery pack will illuminate in turn as the battery charges, until all four lights are illuminated.

Once fully charged, the four LED lights will remain lit and will turn off after 5 minutes.

IMPORTANT: The cleaner on/off pedal must always be in the OFF position during charging.

LED LIGHTS BATTERY INDICATOR:

- <15%, FLASHING
- 15%~25%
- 26%~50%
- 51%~75%
- 76%~100%

IMPORTANT: Always ensure battery has sufficient battery capacity before use. Charge your cleaner if one LED light is flashing (remaining capacity ≤ 15%).

When the cleaner is in use, the LED lights battery indicator will illuminate indicating how much charge is remaining.

When the battery charge level is ≤ 15%, the first LED light will flash for 5 seconds before the cleaner will automatically switch off.

When the cleaner is not in use, the battery level can be checked by pressing the Battery Charge Status Button (P2). The LED lights battery indicator will remain lit for 5 seconds.

IMPORTANT:

1. Use only the charger supplied with your cleaner.
2. Charge temperature: 0~45°C.
3. When charging the cleaner, it will automatically turn off.
4. It is normal for the charger to become warm when charging.
5. Unplug the charger in the event of prolonged absence (holidays, etc.).

NOTE: To optimise the battery performance you should fully charge the battery pack on a regular basis or at least once per year.

USING YOUR CLEANER

1. Adjust the telescopic tube to the desired height by moving the extension tube adjuster.
2. After connecting the telescopic tube lower end to Carpet and Floor Nozzle** or accessories if required, press the floor type selector* pedal on the nozzle to select the ideal cleaning mode for the floor type:

Hard Floor – Brushes are lowered to protect the floor.

Carpet – Brushes are raised for deeper cleaning.

Carpet & Floor Nozzle:** [4]

- **Hard floor Cleaning:** Press the pedal on the nozzle on Hard Floor mode and adjust the slider on the nozzle on ALL FLOORS. In this position brushes, wheels and wiper blade are lowered to protect hard floors. [4a]

- **Standard Carpet & Rugs Cleaning:** Press the pedal on the nozzle on Carpet mode and adjust the slider on the nozzle on ALL FLOORS. In this position brushes and wiper blade are raised while wheels are lowered to allow a perfect ease of movement on such surfaces. [4b]

- **Deep Carpet cleaning:** Press the pedal on the nozzle on Carpet mode and adjust the slider on the nozzle on DEEP CARPET CLEANING. In this position brushes, wheels and wiper blade are raised for a deeper cleaning of your carpet. [4c]

WARNING: It is recommended to avoid potential scratching of wooden floors that the pedal is not set on hard floor mode and the slider on deep carpet cleaning.

3. Switch the cleaner on by pressing the on/off Pedal on the cleaner main body.
4. Adjust the power level by pressing the turbo power control button* on main body.

Eco mode: The product will always start working in eco mode when you press the ON/OFF pedal.

Turbo mode: To enable turbo mode, press turbo power control button for deep clean. To disable turbo mode, press turbo power control button again.

5. Adjust the suction regulator* to the desired level. [10]

Switch the cleaner off at the end of use by pressing the on/off Pedal.

Parking and storage – The tube can be parked on the back of the cleaner for storage or temporary storage while in use.

CLEANER MAINTENANCE

Emptying the Dust Container

When the dust reaches the max level indicator on the container, empty the dust container.

IMPORTANT: To maintain optimum performance do not allow the dust to sit higher than the max level.

1. Release the container by pressing the bin release latch to detach the dust container from the main cleaner and pull upwards to remove. [11]
2. Once the dust container is released from the main body, hold it by the handle and position it above a waste container. With the other hand press the bin flap

release button to open the container. [12]

3. Once emptied, close the bin flap and refit the dust container onto the cleaner ensuring the hook has been positioned correctly in the main body [16]. Then lock the container in place by pushing the container bin handle down until the latch connects with the main body of the cleaner: you will hear a click when fully connected.

NOTICE: Ensure the cleaner is always OFF before emptying.

NOTICE: Ensure the bin flap has been closed before you refit it to the main body.

Cleaning the washable filters

To maintain an optimum cleaning performance, filters should be washed every 3 months and replaced on a regular basis.

IMPORTANT: All bagless cleaners require regular filter cleaning. Failure to clean your filter may result in air blockage, overheating and product failure. This may invalidate your guarantee.

IMPORTANT: Regularly check and maintain the filters.

IMPORTANT: Clean the pre motor filter every 3 cycles (filling the dust container 3 times).

IMPORTANT: Always ensure the filter pack is fully dry before use.

To access the Pre-Motor filter:

IMPORTANT: Switch the product off before accessing the filters.

1. Release the dust container by pressing the bin release latch to detach the dust container from the main cleaner and pull upwards to remove. [11]
2. Release the pre-motor filter cover by pressing pre-motor filter cover latch and rolling pre-motor filter cover on the opposite edge. [17]
3. Remove the filter from main cleaner and wash in lukewarm water. Do not use hot water or detergents. Remove excess water from the filter and leave to dry fully before reusing. [18,21,22]
4. Refit it to the cleaner once fully dry. Press on the top of the filter to ensure it is back into place. [18]
5. Lock the pre-motor filter cover: you will hear a click once the pre-motor filter cover is fitted into place. [17]
6. Refit the dust container to the cleaner ensuring the hook has been positioned correctly in the cleaner body. Then lock the container in place pushing the container bin handle down until the latch connects with the main body of the cleaner: you will hear a click when fully connected. [16]

To access the exhaust filter located on the base of the cleaner:

1. Unlock the exhaust filter door by pressing the two latches and pulling outwards. [19]
2. Remove the filter pack pulling the ring-pull of the exhaust filter. [20]
3. Gently tap and wash the filter unit. Do not use hot water or detergents. Remove excess water from the filter and leave to dry fully before using. [21,22]
4. Reassemble filter pack once it is fully dry and insert it back into the cleaner.
5. Lock the exhaust filter cover by pressing the edge with the clips: you will hear a click

*Certain Models Only **May vary according to the model

once the exhaust filter door fits into place. [19]

IMPORTANT: Do not use the product without the filter pack fitted.

Cleaning the dust container / multi-cyclonic separation unit

This cleaner uses a multi-cyclonic separation system, unique to Hoover. If necessary, the separation unit can be disassembled from the dust container and cleaned.

1. Release the dust container from the cleaner by pressing the bin release latch to detach the dust container from the main cleaner and pull upwards to remove. [11]
2. Hold the dust container with one hand and with the other rotate the dust bin handle anti clockwise to release it from the container. [13]
3. Remove the multi-cyclonic separation unit from the dust container by pulling the handle. [13]
4. If necessary, use a cloth to remove excessive dust from the multi-cyclonic unit surface. [14]
5. Reassemble the multi-cyclonic separation unit with the dust container and rotate it in position. [13]
6. Refit the dust bin to the cleaner ensuring the hook has been positioned correctly in the cleaner body, then lock the container in place by pushing the handle down until the latch connects with the main body of the cleaner: you will hear a click when fully connected. [16]

Removing a blockage from system

1. Check if the dust container is full. If so, refer to “Emptying the dust container”.
2. If the dust container is empty but suction is still low:
 - A. Do the filters need cleaning? If so, refer to “Cleaning the washable filter”.
 - B. Check if there is any other blockage in the system. Use a rod or pole to remove any blockage from the extension tube or flexible hose.
 - C. Check if pre-motor filter is fitted and filter cover is entirely closed.
 - D. Check if the dust container is fitted into place.
 - E. Check if the cyclonic unit needs to be cleaned. Refer to “Cleaning the multi-cyclonic unit”.

Replacing the Batteries

This cleaner is fitted with a rechargeable Lithium ion battery pack which is replaceable.

WARNING: Only use approved replacement parts for your cleaner. Using parts not validated by Hoover is dangerous and will invalidate your guarantee.

WARNING: Do not try to open the battery pack and repair it by yourself.

1. Push the battery release button to eject the battery pack. [7]
2. Remove the battery pack slowly from the slot. [7]
3. Remove the old battery pack and replace it with a new one.
4. Dispose of the batteries safely. Used batteries should be taken to a recycling station and not disposed off with household waste.

End of Product Life Battery Disposal

If the cleaner is to be disposed, the batteries should be removed. Used batteries should be taken to a recycling station and not disposed of with household waste.

IMPORTANT: Always fully discharge the batteries before removal and ensure the charger is unplugged.

1. Run the cleaner until the batteries are completely empty.
2. Press the battery release button and the battery pack will be ejected automatically.
3. Remove the battery pack slowly from the cleaner.
4. Remove the batteries from the cleaner.

NOTE: Should you experience any difficulties in dismantling the unit or for more detailed information about treatment, recovery and recycling of this product, please contact your local city office or your household waste disposal service.

ACCESSORIES AND NOZZLES

The crevice tool*, furniture nozzle* and dusting brush** are stored on the telescopic tube through a practical accessories' holder. They can be fitted to the handle or the end of telescopic tube.

On certain models the dusting brush is conveniently integrated in the hose handle.

- **Crevice Tool*** – For corners and hard to reach areas. [V1]
- **Dusting Brush**** – For bookshelves, frames, keyboards and other delicate areas. [V2]
- **Furniture Nozzle*** – For soft furnishings and fabrics. [V3]
- **Parquet Nozzle*** – For parquet floors and other delicate floors. [AE]

USER CHECK LIST

Should you have a problem with the product, complete this simple user checklist before calling your local Hoover service.

- Does the cleaner not switch on? Please check if the battery is charged.
- Does the battery not charge?
- 1. This may be a result of very long storage periods (over one year).
Contact Hoover customer service to arrange battery replacement. Please refer to “Replacing the Battery”. If the problem persists contact the Hoover customer service centre.
- 2. You may be operating with an incorrect charger. The correct voltage of the charger is from 19V to 22V.
- Is there a working electricity supply to the cleaner? Please check with another electrical appliance
- Is the dust container over-filled? Please refer to “emptying the dust container”
- Is the Filter blocked? Please refer to ‘Cleaning the washable filter’
- Check pre motor filter is fitted correctly and filter cover is entirely closed.
- Check if the Dust Container is fitted into place.
- Check if the multi-cyclonic unit needs to be cleaned. Refer to “Cleaning the multi-cyclonic unit”.
- Is the hose or nozzle blocked? Please refer to ‘Removing a blockage from the system’
- Has the cleaner overheated? If so, it will take approximately 30 minutes to automatically reset.

IMPORTANT INFORMATION

Hoover spares and Consumables

Always replace parts with genuine Hoover spares. These are available from your local Hoover dealer or direct from Hoover. When ordering parts always quote your model number.

- Battery Pack: BAT18VLI 001 39800041

Hoover Service

Should you require service, spares and consumables at any time, please contact your local Hoover Service Office.

Quality

Hoover's factories have been independently assessed for quality. Our products are made using a quality system which meets the requirements of ISO 9001

Your Guarantee

The guarantee conditions for this appliance are as defined by our representative in the country in which it is sold. Details regarding these conditions can be obtained from the dealer from whom the appliance was purchased. The bill of sale or receipt must be produced when making any claim under the terms of this guarantee.

IMPORTANT: The battery in this cleaner is guaranteed for 1 year from purchase. After 1 year, the customer is liable for the cost of a new battery.

Subject to change without notice.